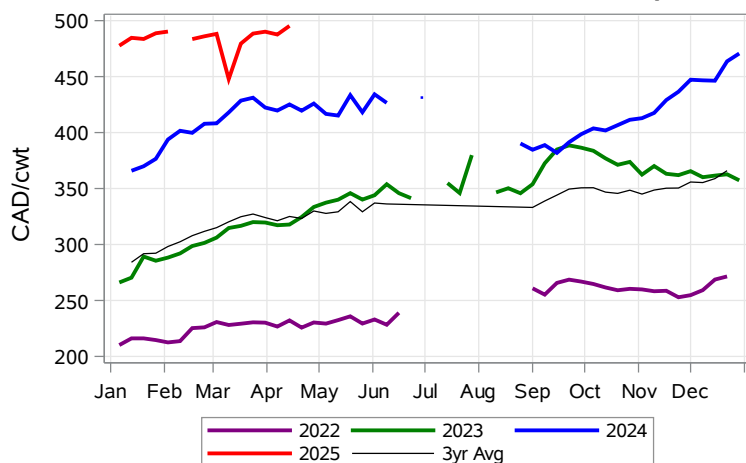


While many factors influence livestock prices, the following are some of the key market indicators that may be helpful when making your LPI purchasing decisions.

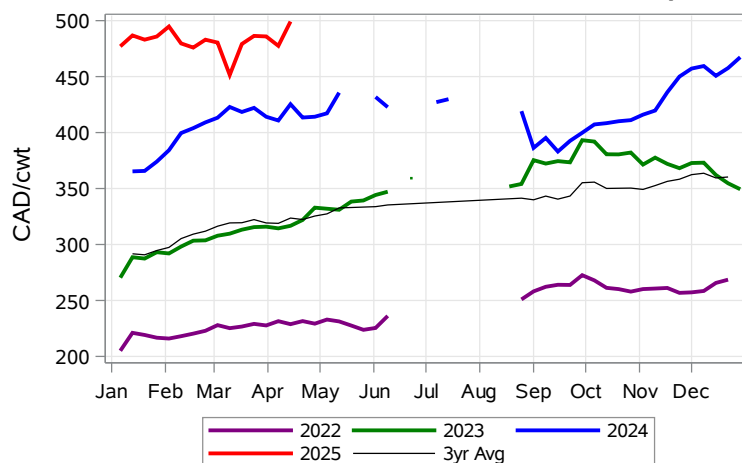
### Calf Settlement Index (Week of Apr 14)



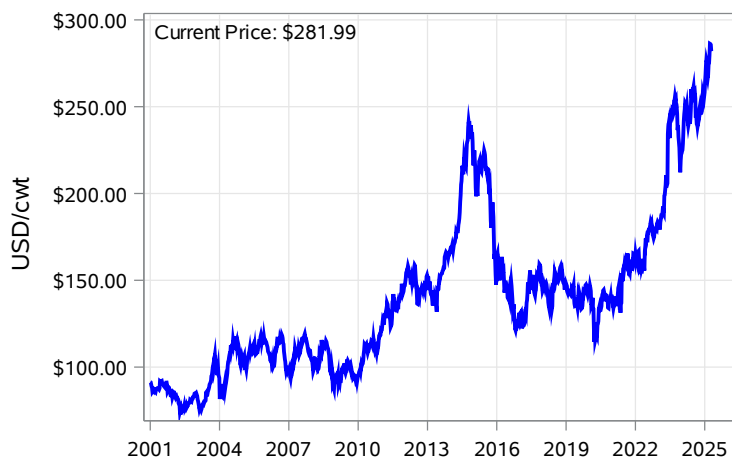
### Calf Alberta Settlement Index (Week of Apr 14)



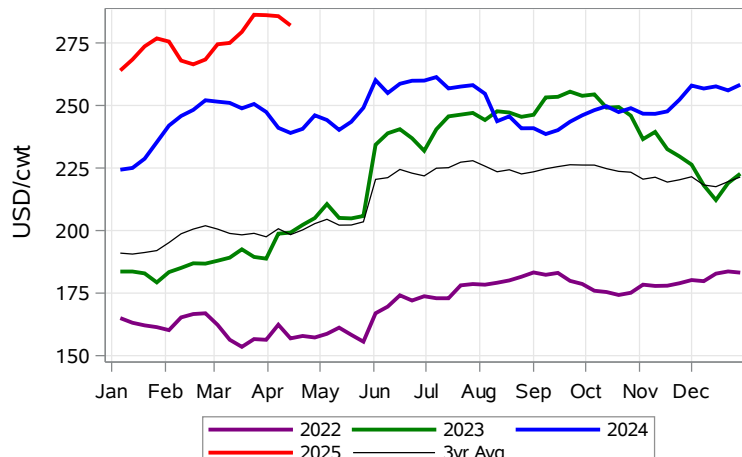
### Calf SaskMan Settlement Index (Week of Apr 14)



### Nearby Feeder Futures Price (Week of Apr 14)



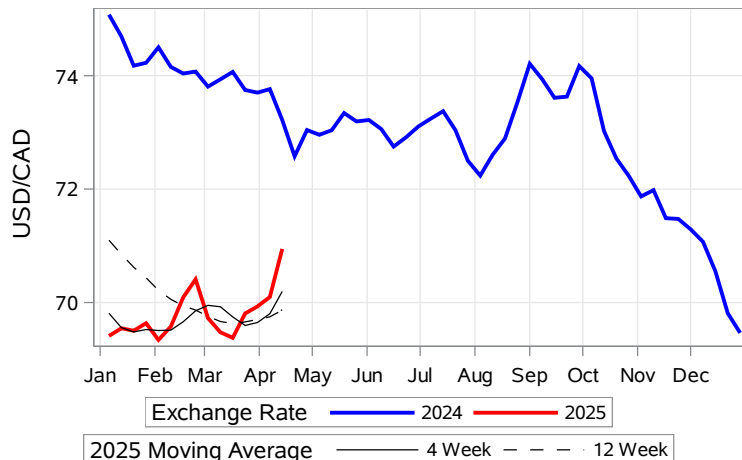
### Nearby Feeder Futures Price (Week of Apr 14)



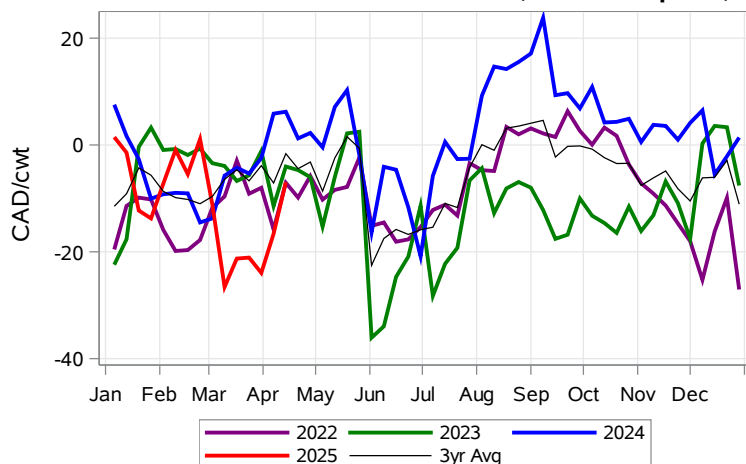
**USD/CAD Exchange Rate**



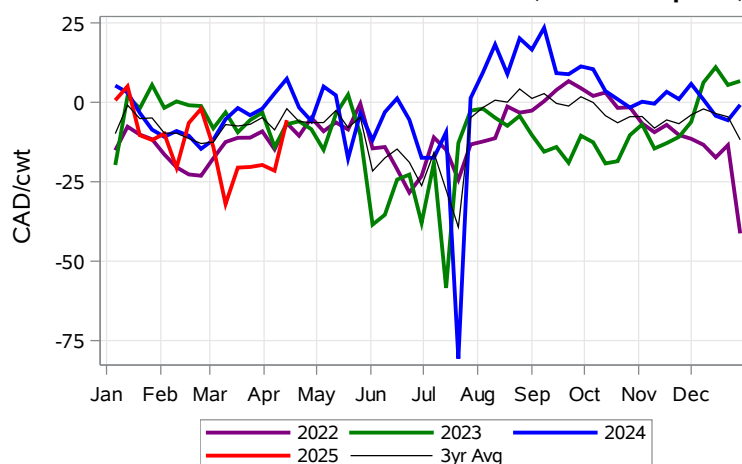
**USD/CAD Exchange Rate with Moving Average**



**Feeder Cash to Futures Basis Alberta (Week of Apr 14)**



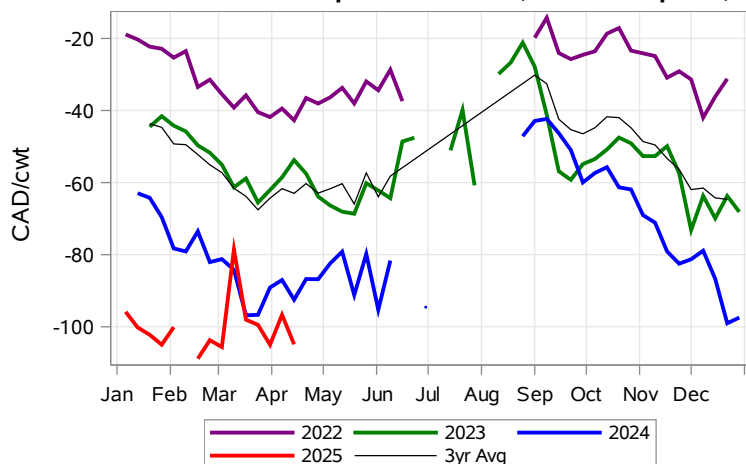
**Feeder Cash to Futures Basis SaskMan (Week of Apr 14)**



**Feeder to Calf Spread (Week of Apr 14)**



**Feeder to Calf Spread Alberta (Week of Apr 14)**



**Feeder to Calf Spread SaskMan (Week of Apr 14)**

