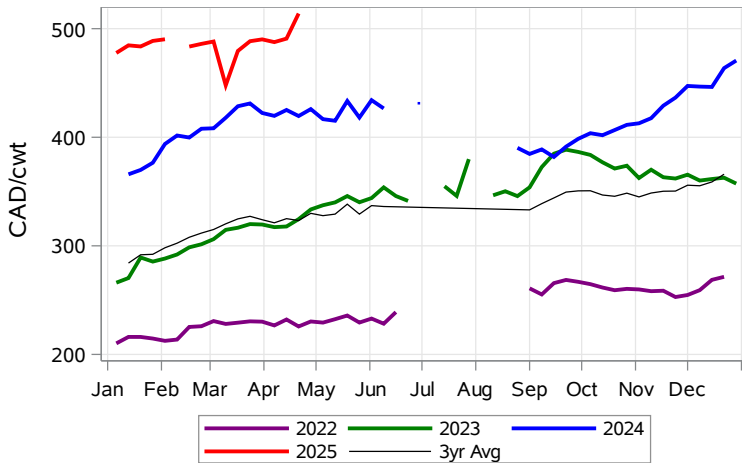


While many factors influence livestock prices, the following are some of the key market indicators that may be helpful when making your LPI purchasing decisions.

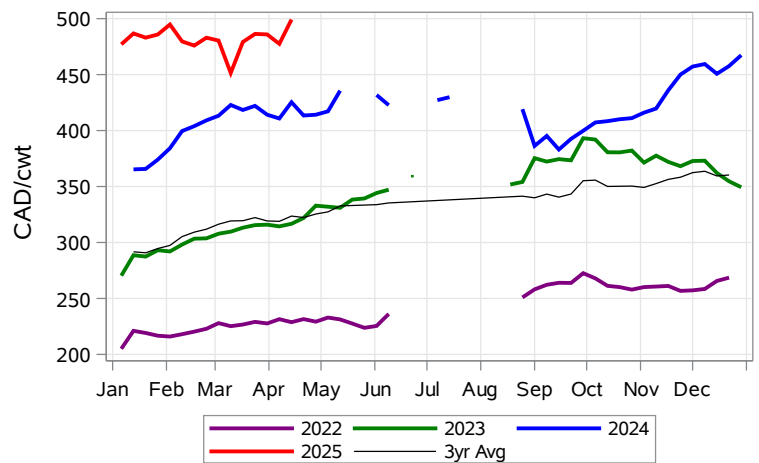
**Calf Settlement Index (Week of Apr 21)**



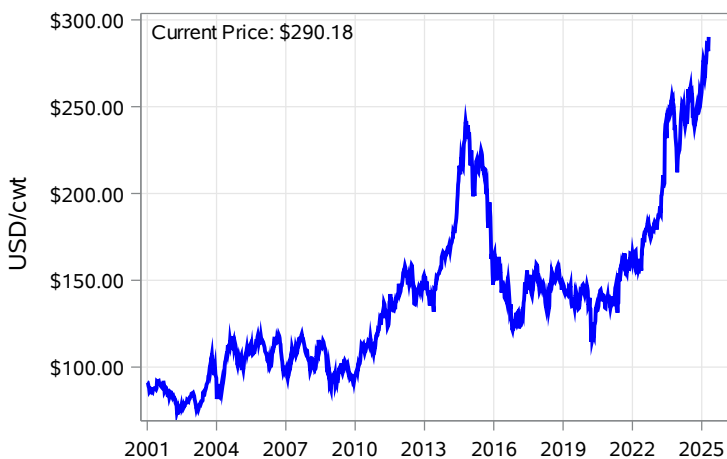
**Calf Alberta Settlement Index (Week of Apr 21)**



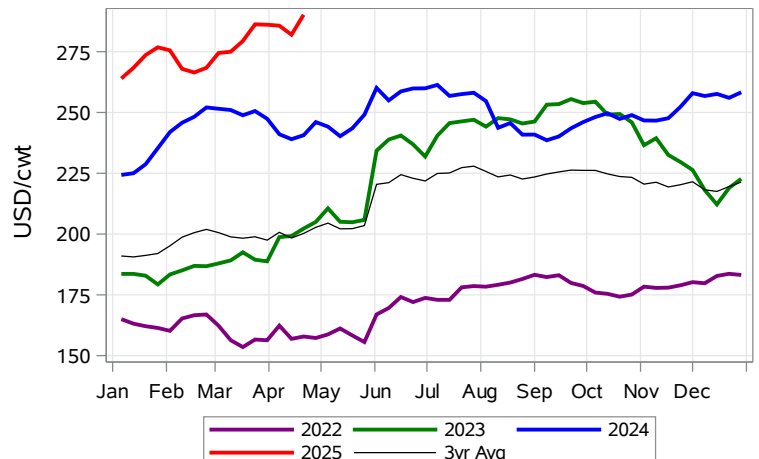
**Calf SaskMan Settlement Index (Week of Apr 21)**



**Nearby Feeder Futures Price (Week of Apr 21)**



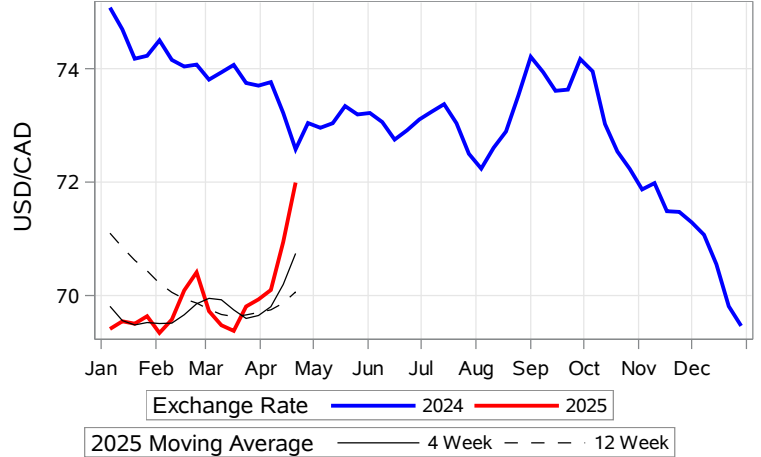
**Nearby Feeder Futures Price (Week of Apr 21)**



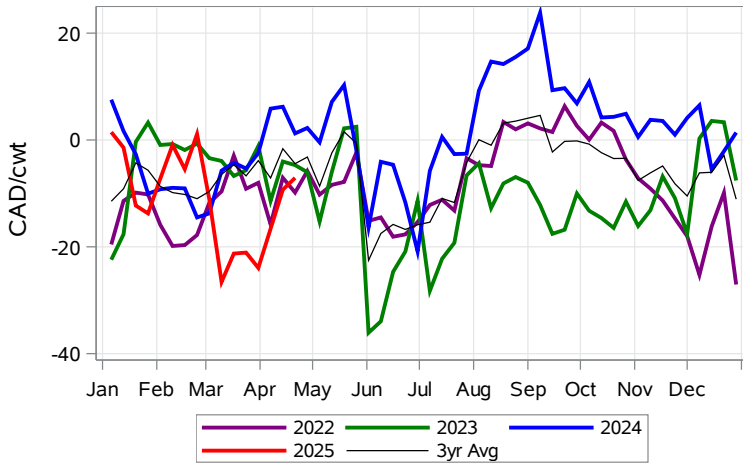
**USD/CAD Exchange Rate**



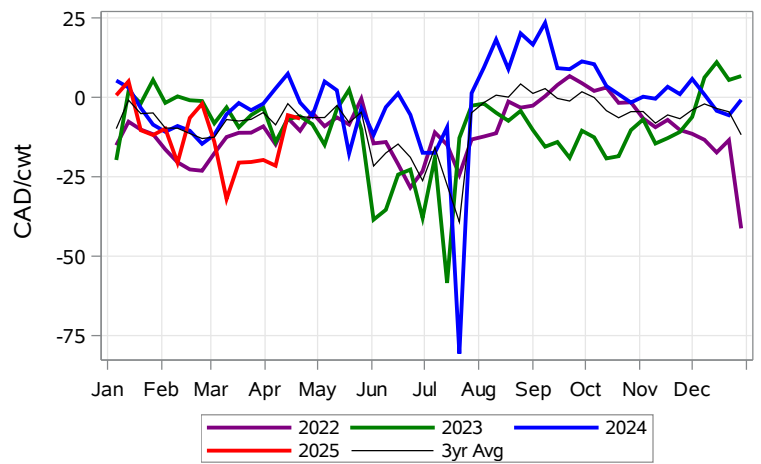
**USD/CAD Exchange Rate with Moving Average**



**Feeder Cash to Futures Basis Alberta (Week of Apr 21)**



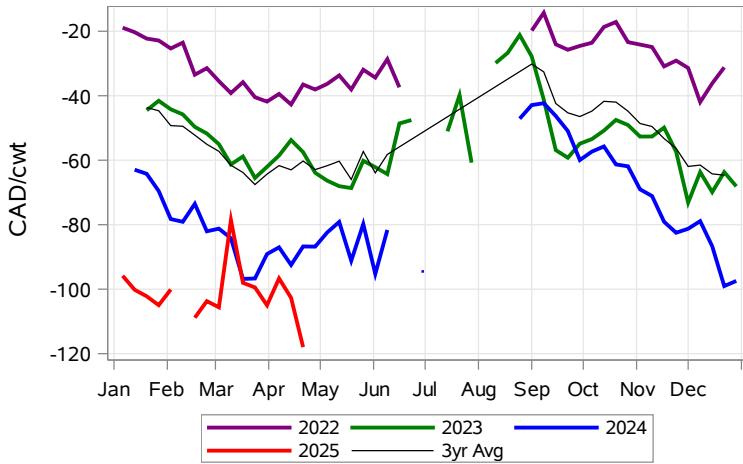
**Feeder Cash to Futures Basis SaskMan (Week of Apr 21)**



**Feeder to Calf Spread (Week of Apr 21)**



**Feeder to Calf Spread Alberta (Week of Apr 21)**



**Feeder to Calf Spread SaskMan (Week of Apr 21)**

