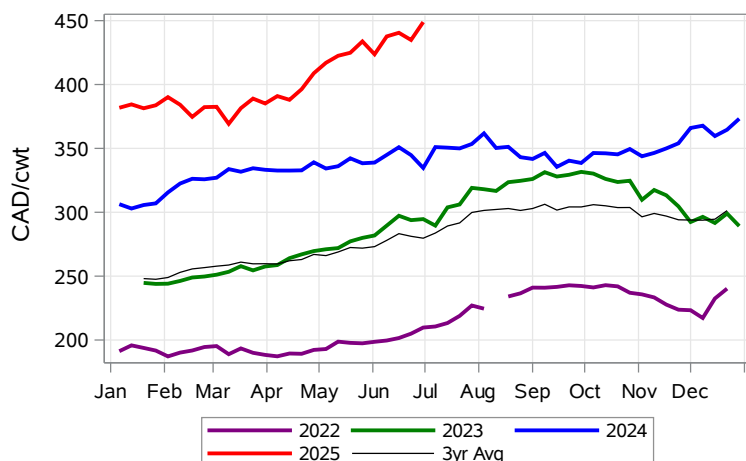


While many factors influence livestock prices, the following are some of the key market indicators that may be helpful when making your LPI purchasing decisions.

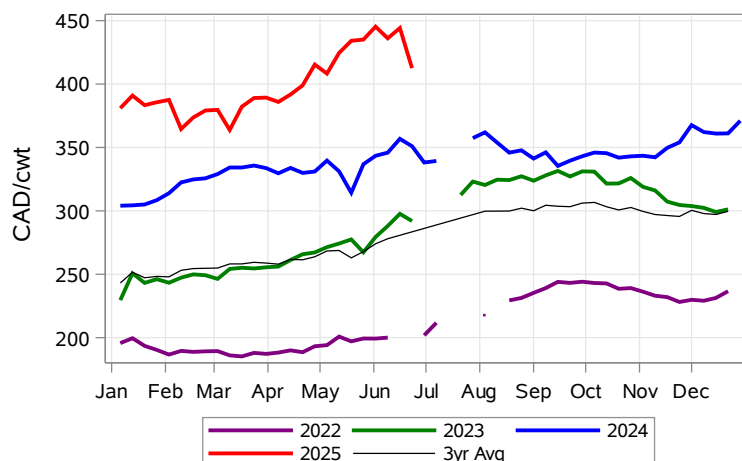
### Feeder Settlement Index (Week of Jun 30)



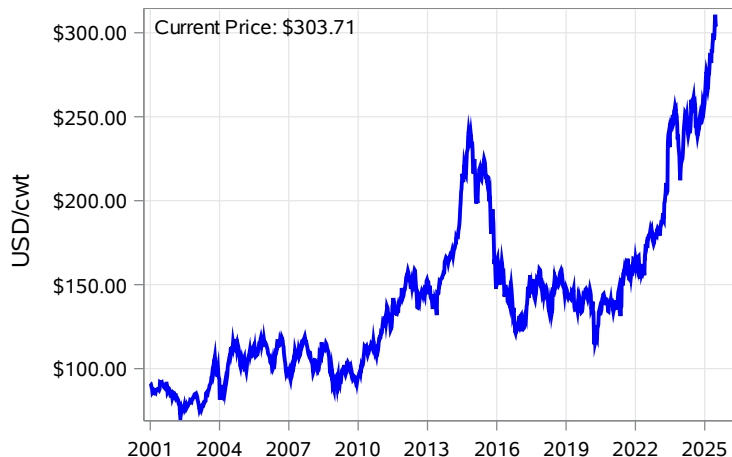
### Feeder Alberta Settlement Index (Week of Jun 30)



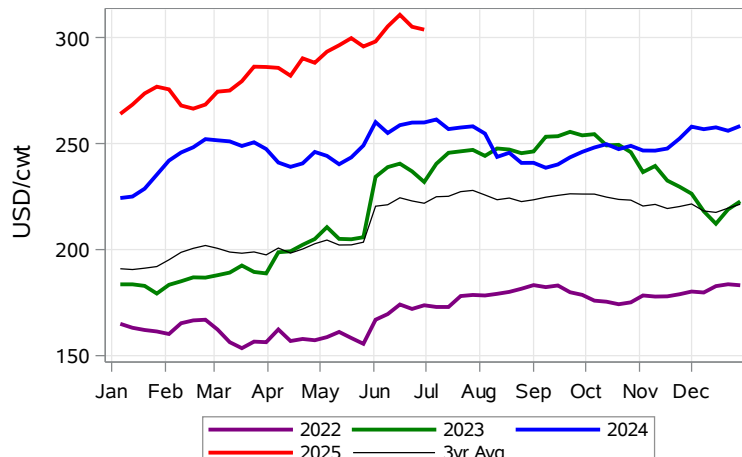
### Feeder SaskMan Settlement Index (Week of Jun 30)



### Nearby Feeder Futures Price (Week of Jun 30)



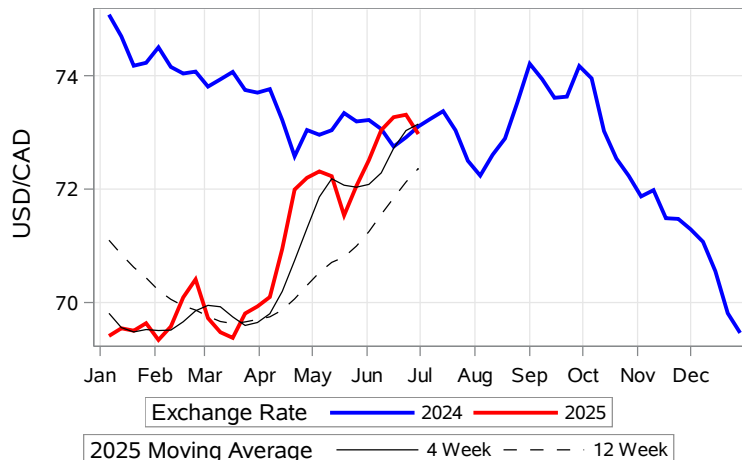
### Nearby Feeder Futures Price (Week of Jun 30)



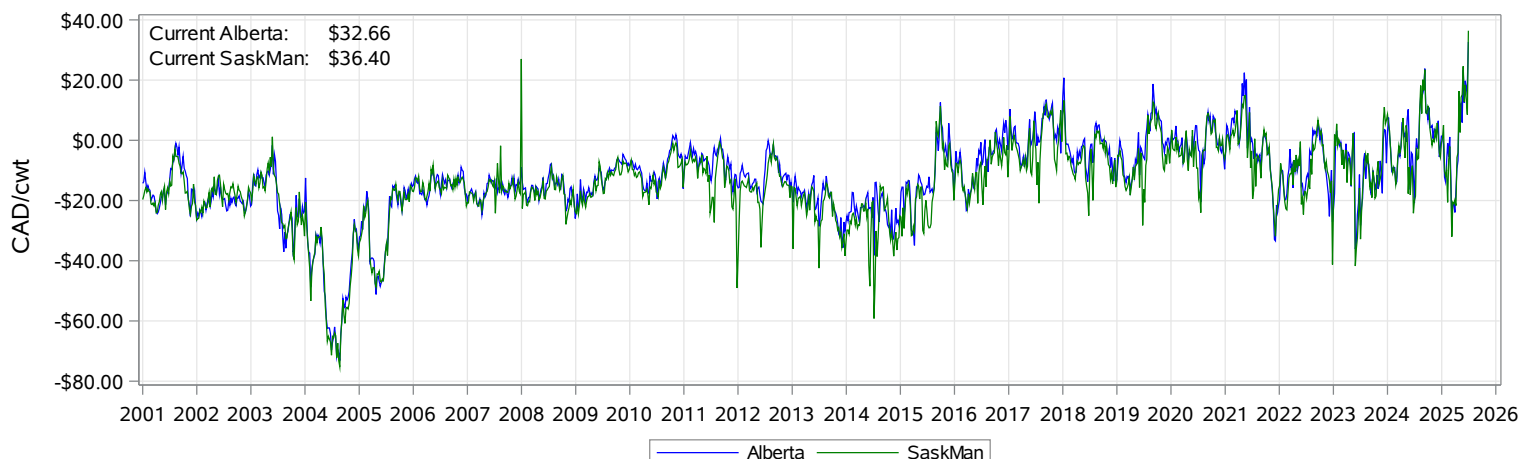
**USD/CAD Exchange Rate**



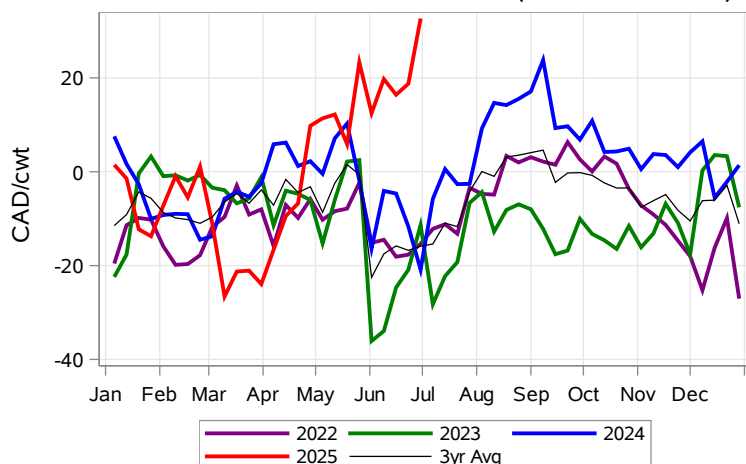
**USD/CAD Exchange Rate with Moving Average**



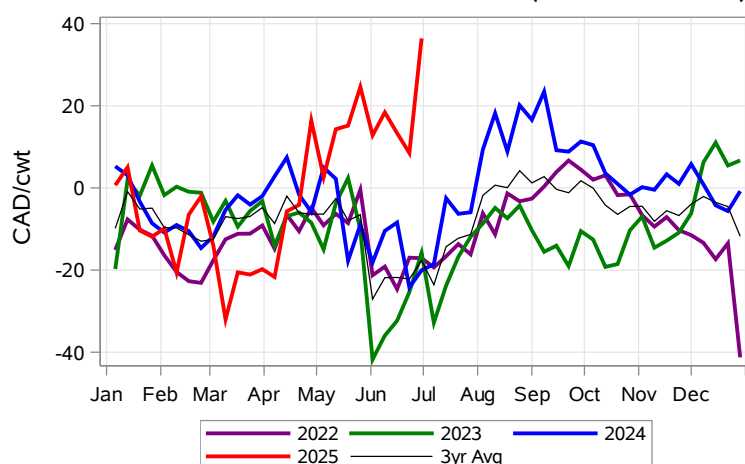
**Feeder Cash to Futures Basis (Week of Jun 30)**



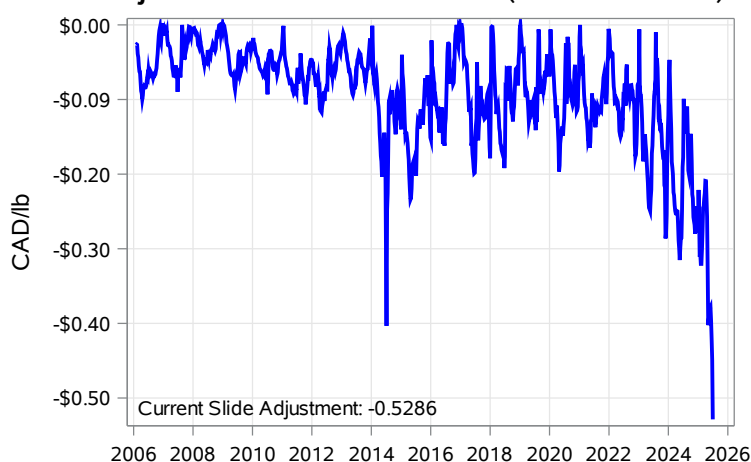
**Feeder Cash to Futures Basis Alberta (Week of Jun 30)**



**Feeder Cash to Futures Basis SaskMan (Week of Jun 30)**



**Slide Adjustment 750-950lbs Alberta (Week of Jun 30)**



**Feeder Slide Adjustment Alberta (Week of Jun 30)**

