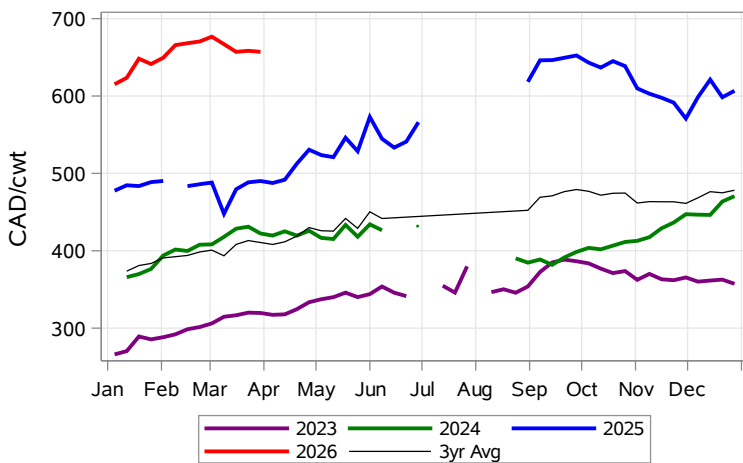


While many factors influence livestock prices, the following are some of the key market indicators that may be helpful when making your LPI purchasing decisions.

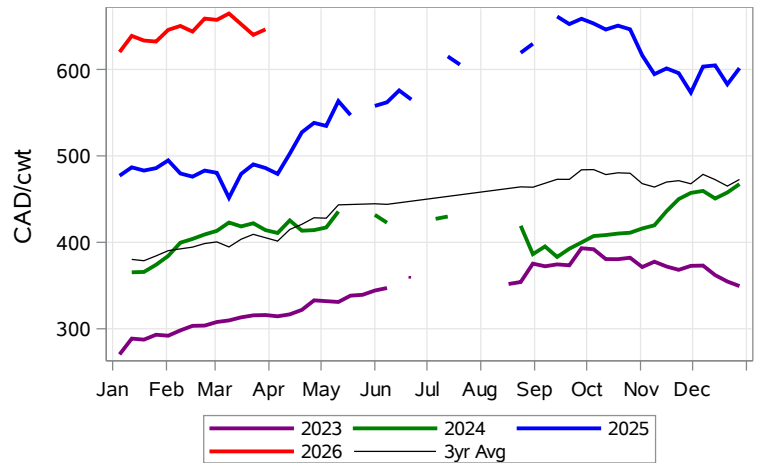
**Calf Settlement Index (Week of Mar 30)**



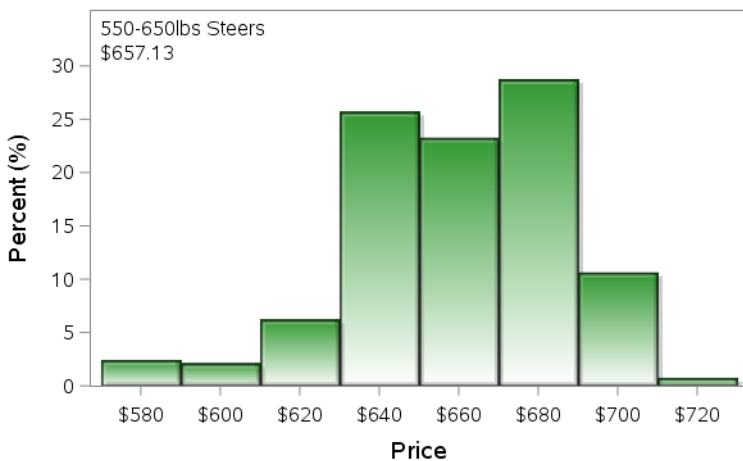
**Calf Alberta Settlement Index (Week of Mar 30)**



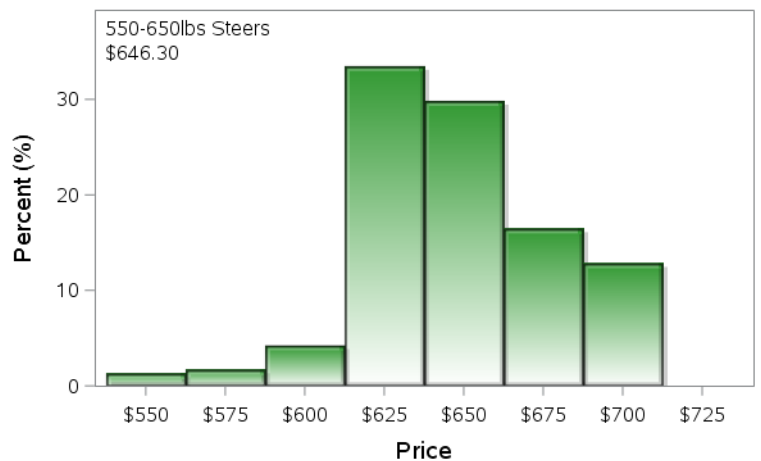
**Calf SaskMan Settlement Index (Week of Mar 30)**



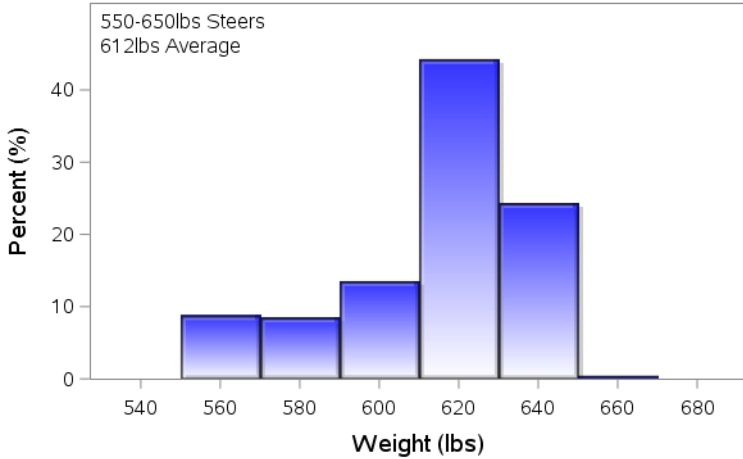
**Alberta Settlement Price Data (Week of Mar 30)**



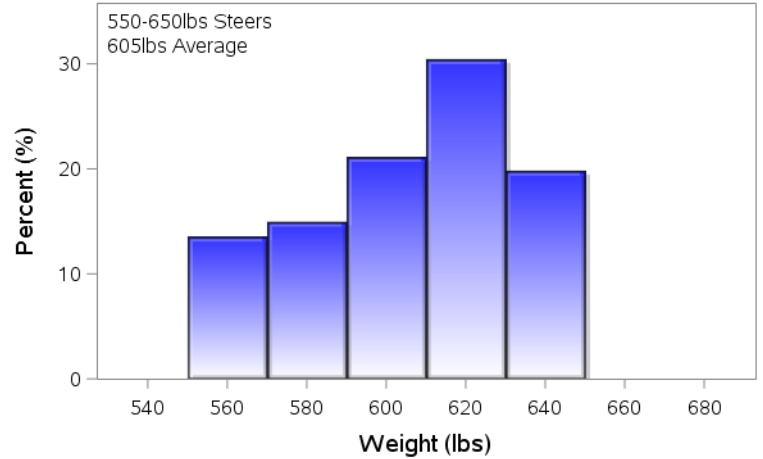
**SaskMan Settlement Price Data (Week of Mar 30)**



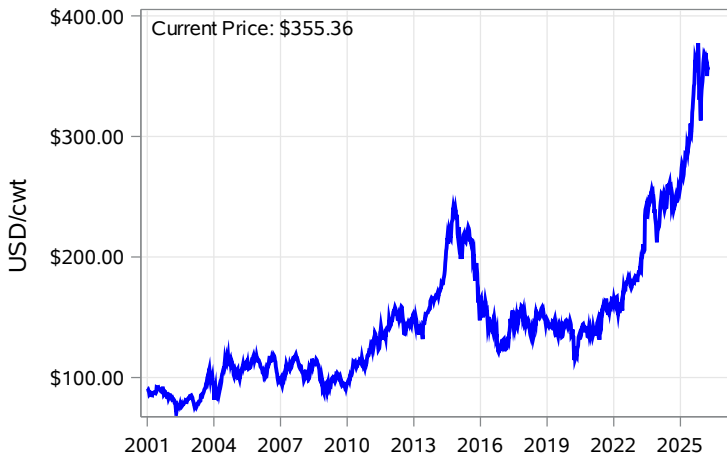
**Alberta Settlement Weight Data (Week of Mar 30)**



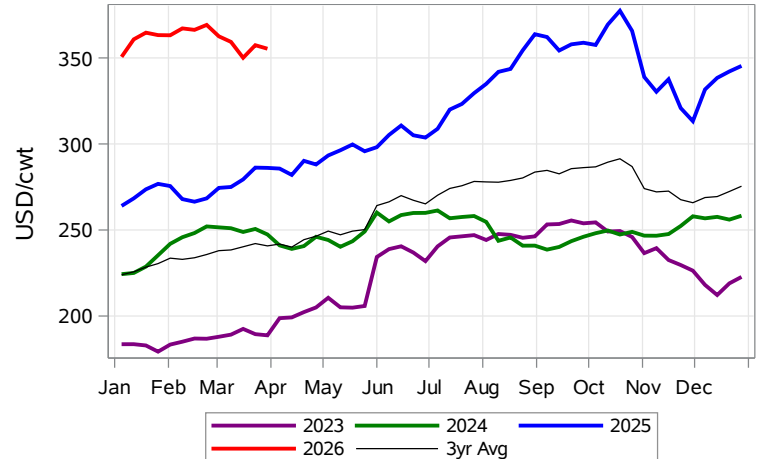
**SaskMan Settlement Weight Data (Week of Mar 30)**



**Nearby Feeder Futures Price (Week of Mar 30)**



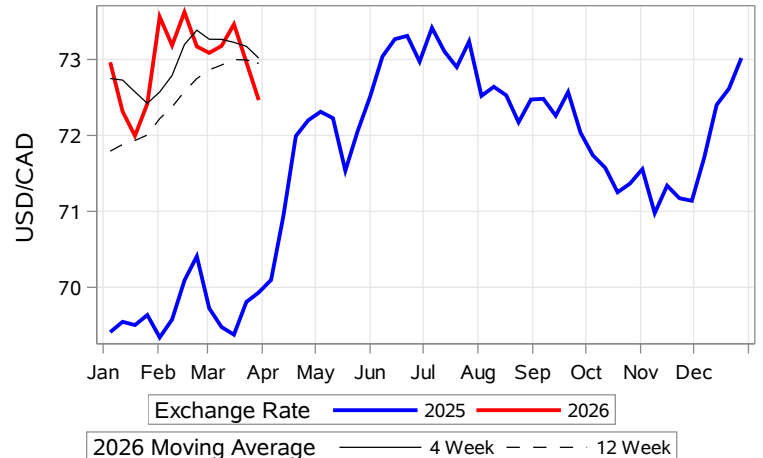
**Nearby Feeder Futures Price (Week of Mar 30)**



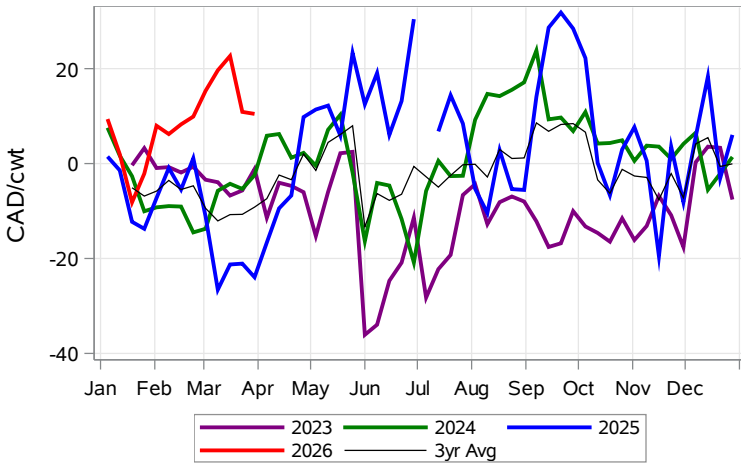
**USD/CAD Exchange Rate**



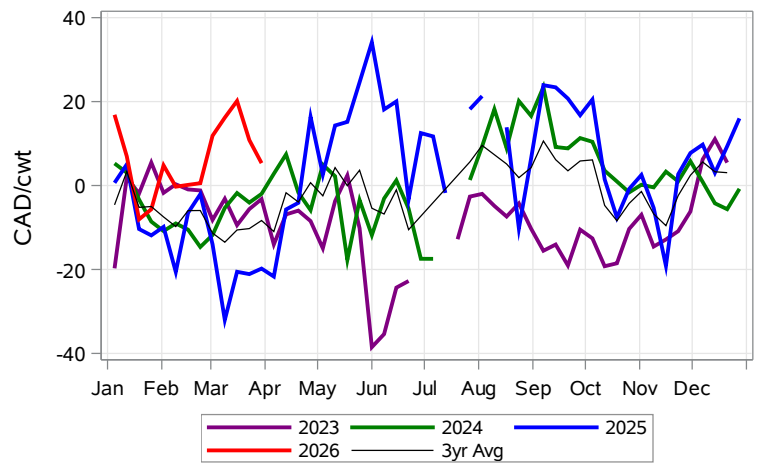
**USD/CAD Exchange Rate with Moving Average**



**Feeder Cash to Futures Basis Alberta (Week of Mar 30)**



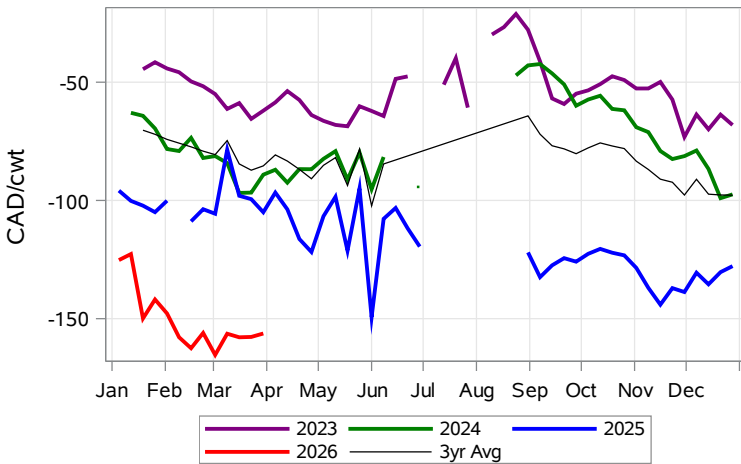
**Feeder Cash to Futures Basis SaskMan (Week of Mar 30)**



**Feeder to Calf Spread (Week of Mar 30)**



**Feeder to Calf Spread Alberta (Week of Mar 30)**



**Feeder to Calf Spread SaskMan (Week of Mar 30)**

