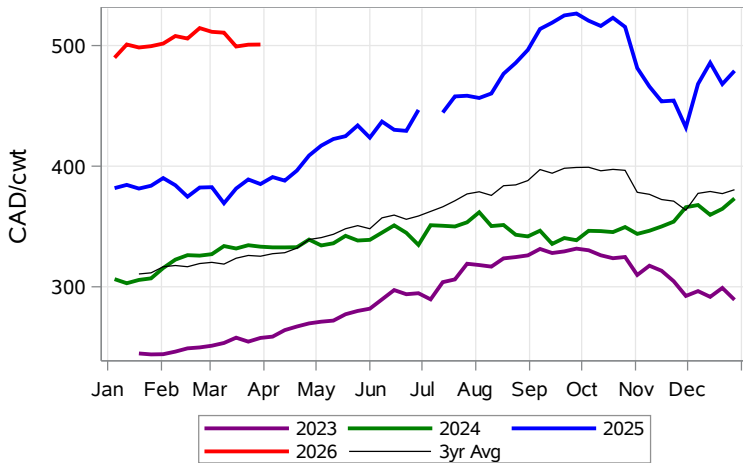


While many factors influence livestock prices, the following are some of the key market indicators that may be helpful when making your LPI purchasing decisions.

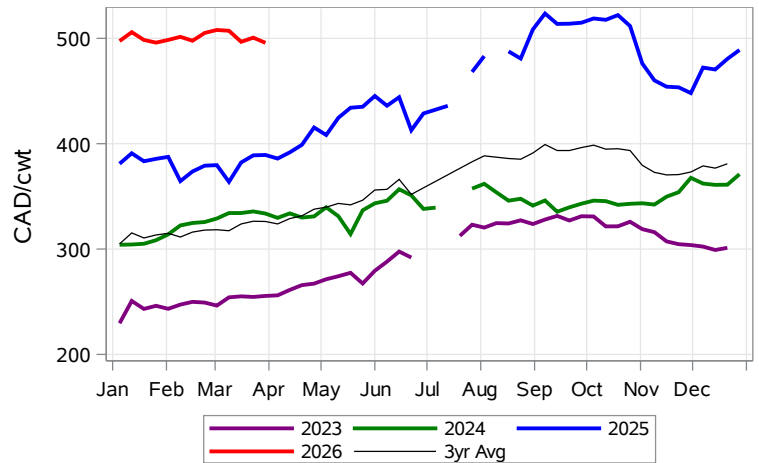
Feeder Settlement Index (Week of Mar 30)



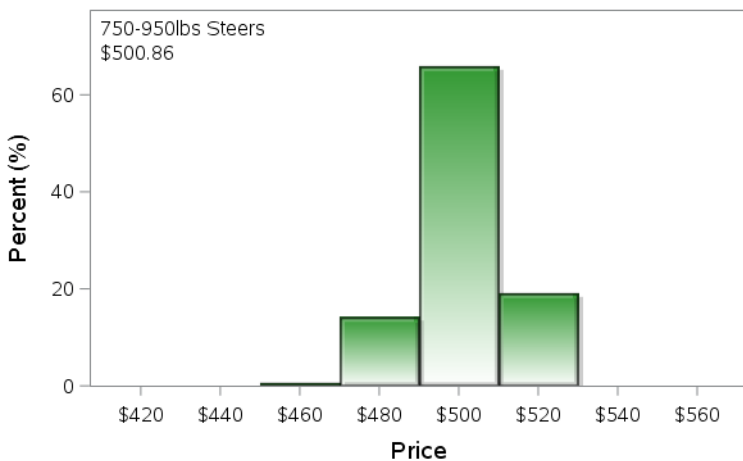
Feeder Alberta Settlement Index (Week of Mar 30)



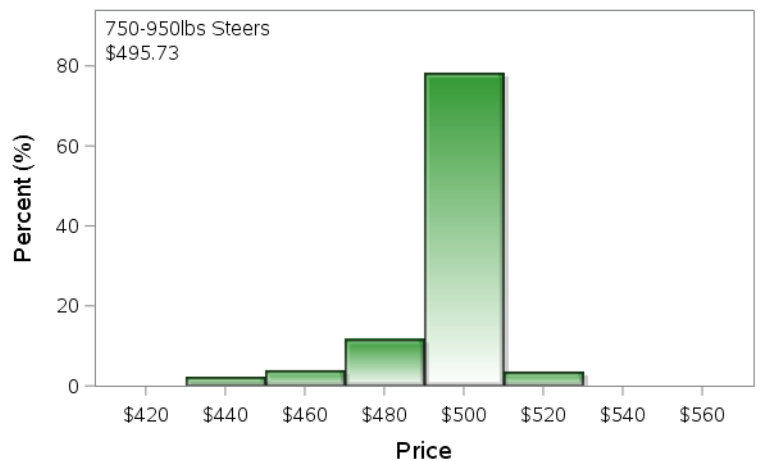
Feeder SaskMan Settlement Index (Week of Mar 30)



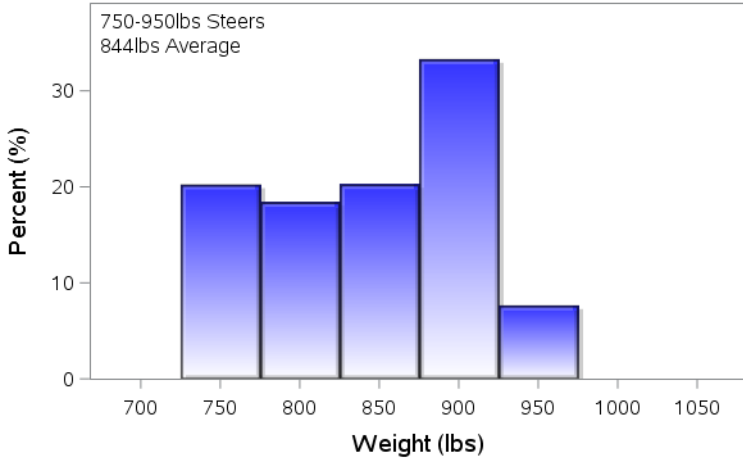
Alberta Settlement Price Data (Week of Mar 30)



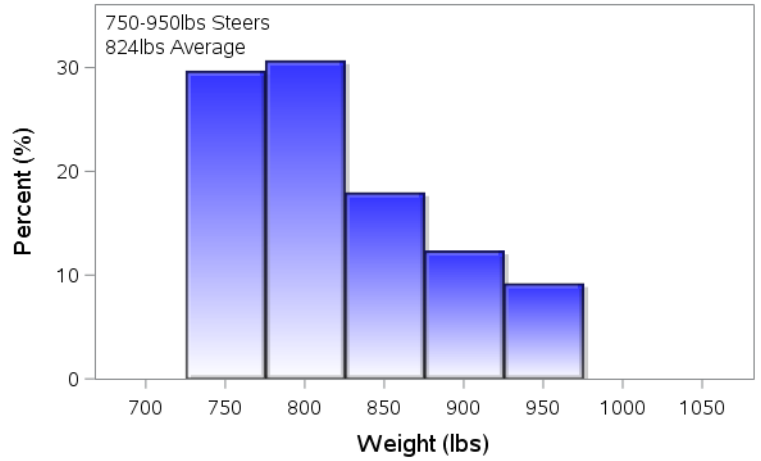
SaskMan Settlement Price Data (Week of Mar 30)



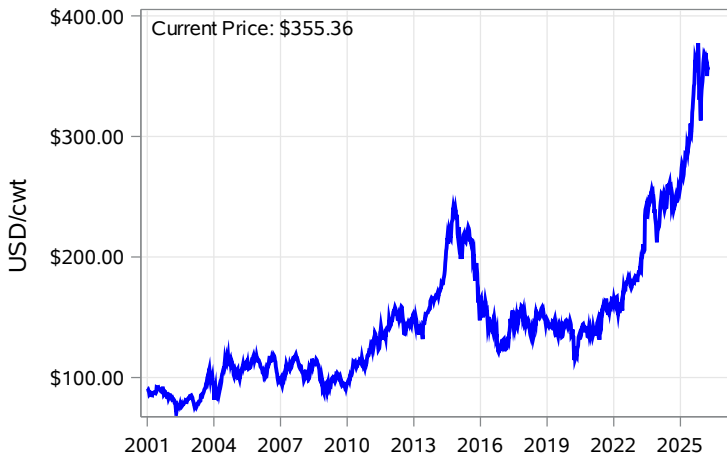
Alberta Settlement Weight Data (Week of Mar 30)



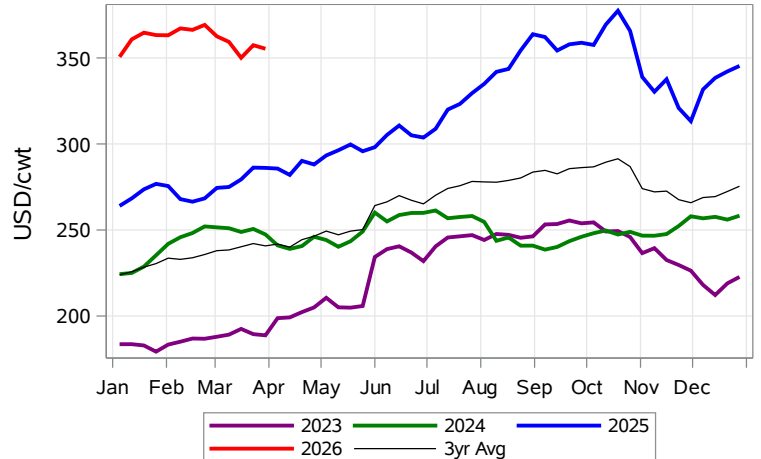
SaskMan Settlement Weight Data (Week of Mar 30)



Nearby Feeder Futures Price (Week of Mar 30)



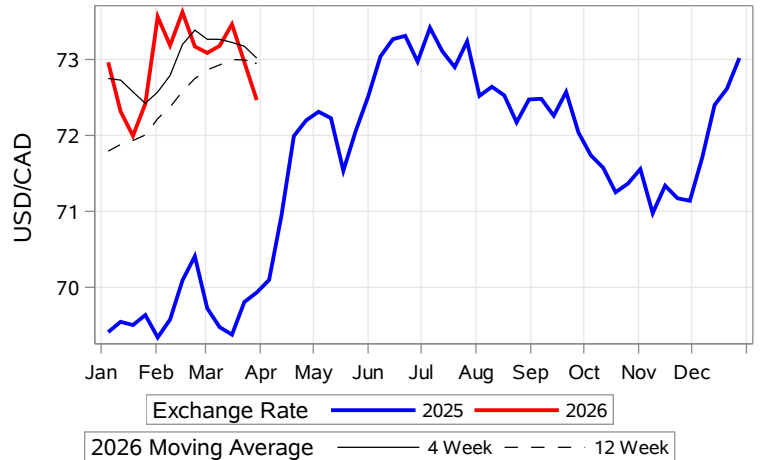
Nearby Feeder Futures Price (Week of Mar 30)



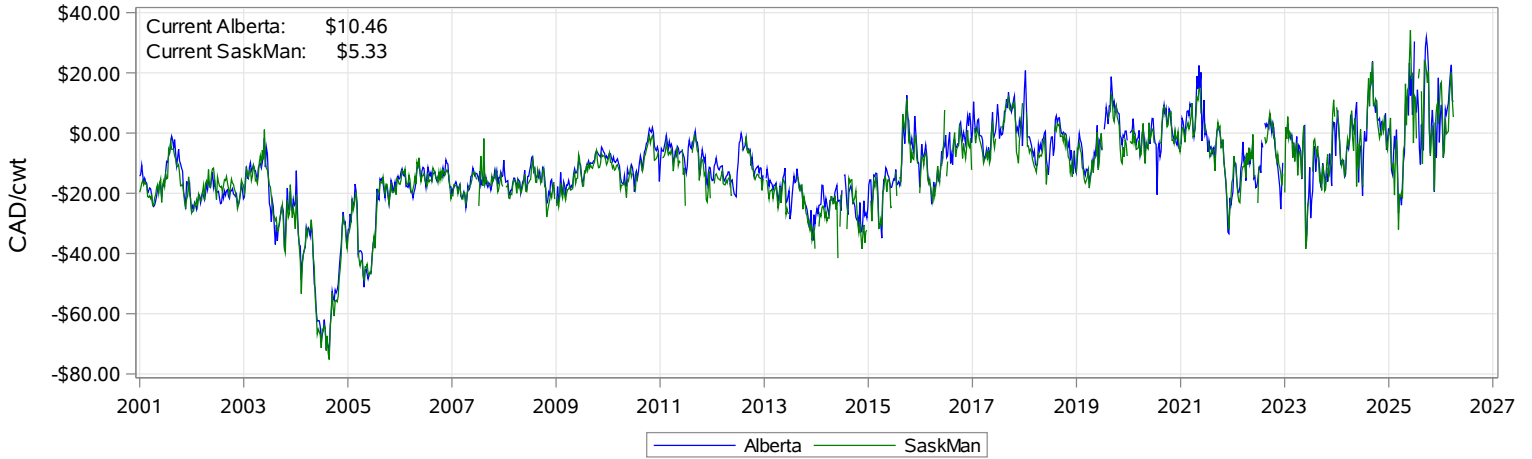
USD/CAD Exchange Rate



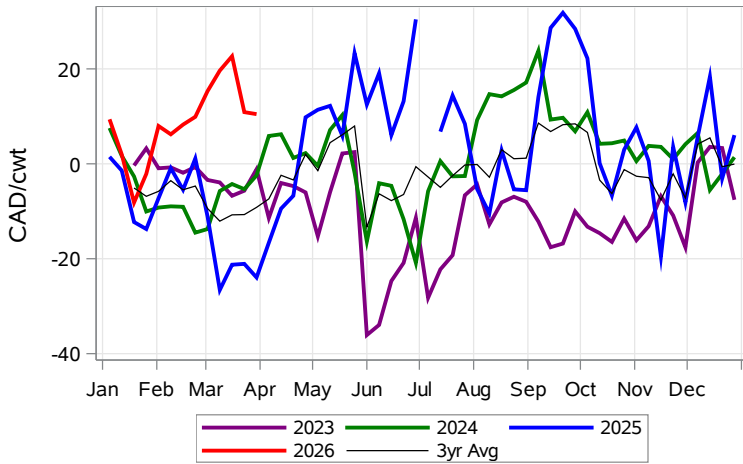
USD/CAD Exchange Rate with Moving Average



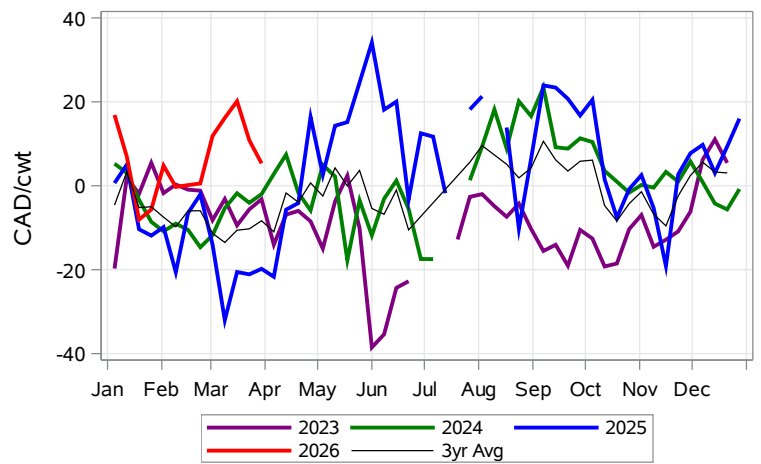
Feeder Cash to Futures Basis (Week of Mar 30)



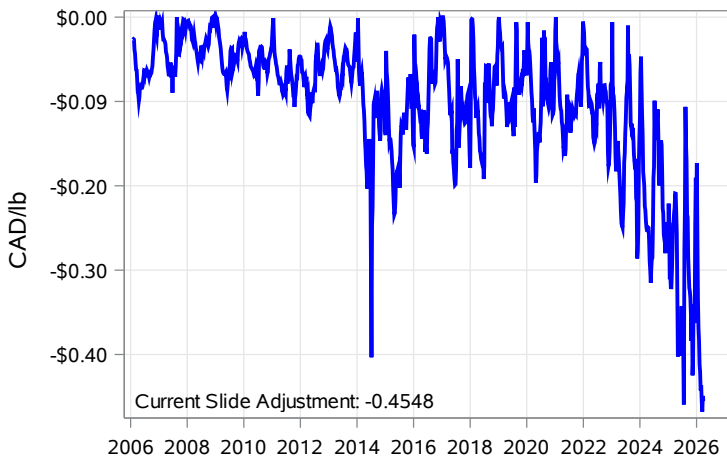
Feeder Cash to Futures Basis Alberta (Week of Mar 30)



Feeder Cash to Futures Basis SaskMan (Week of Mar 30)



Slide Adjustment 750-950lbs Alberta (Week of Mar 30)



Feeder Slide Adjustment Alberta (Week of Mar 30)

