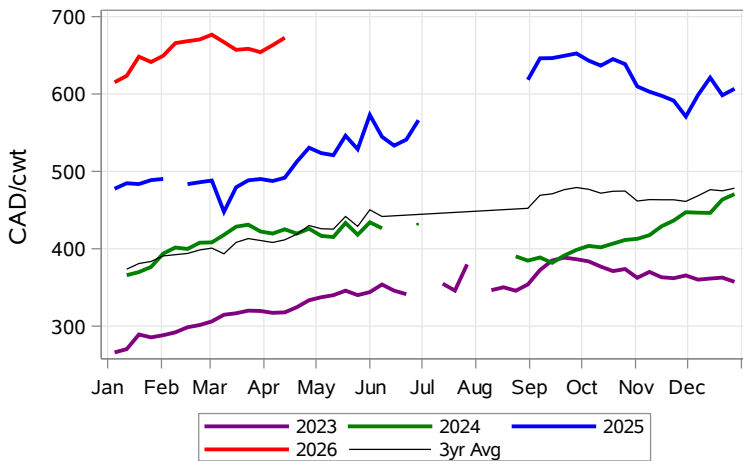


While many factors influence livestock prices, the following are some of the key market indicators that may be helpful when making your LPI purchasing decisions.

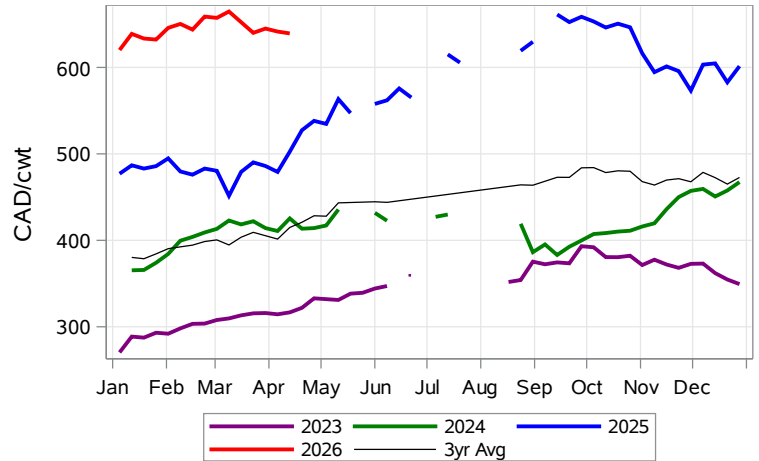
Calf Settlement Index (Week of Apr 13)



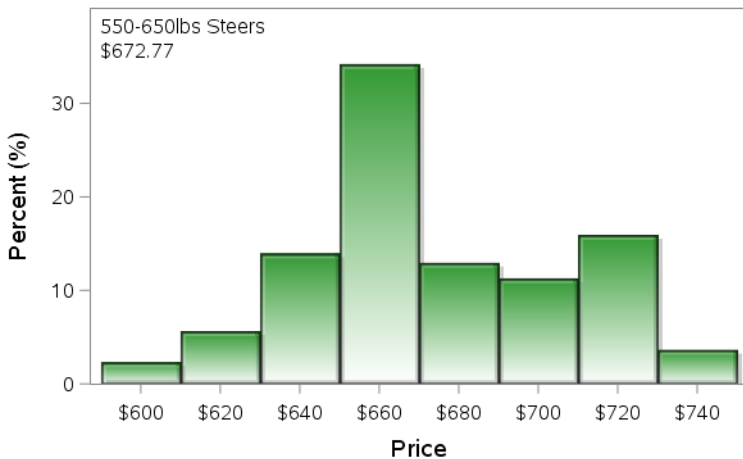
Calf Alberta Settlement Index (Week of Apr 13)



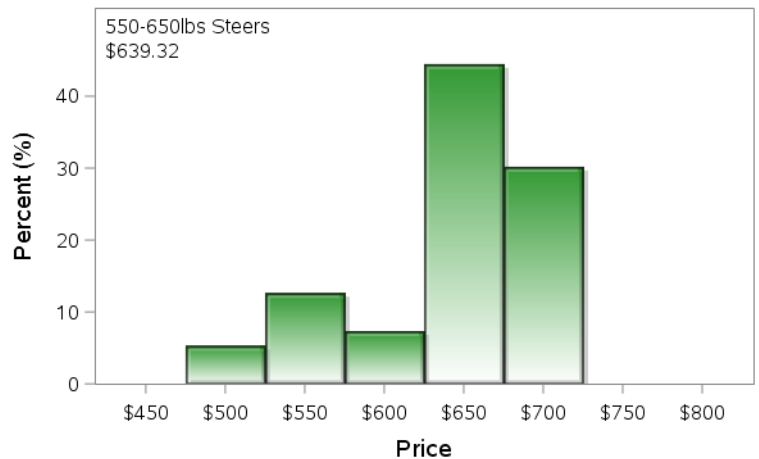
Calf SaskMan Settlement Index (Week of Apr 13)



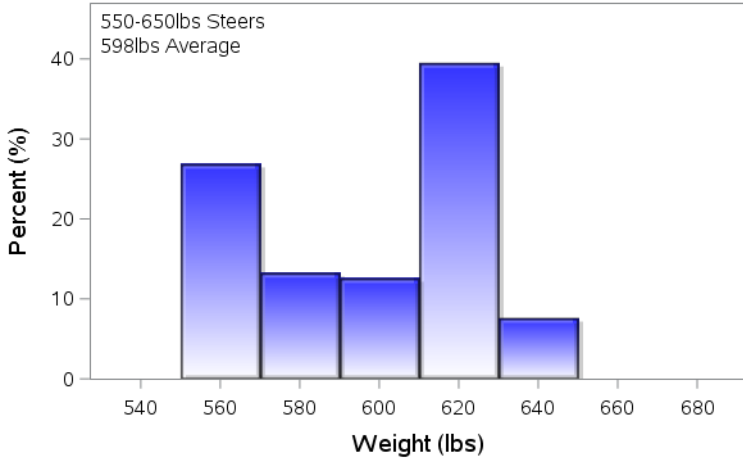
Alberta Settlement Price Data (Week of Apr 13)



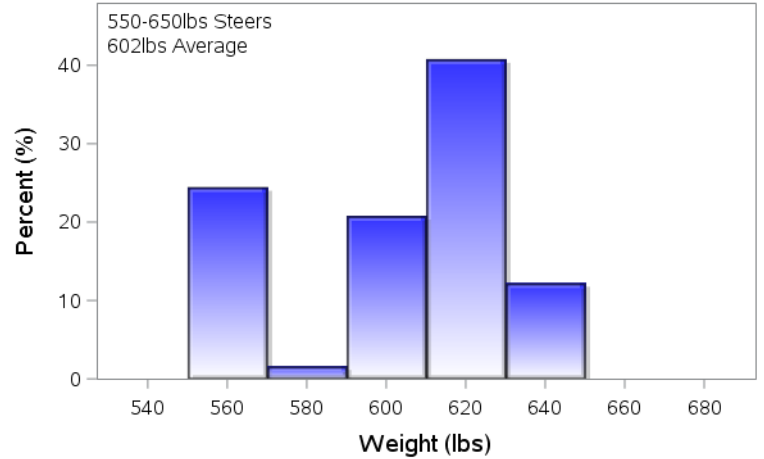
SaskMan Settlement Price Data (Week of Apr 13)



Alberta Settlement Weight Data (Week of Apr 13)



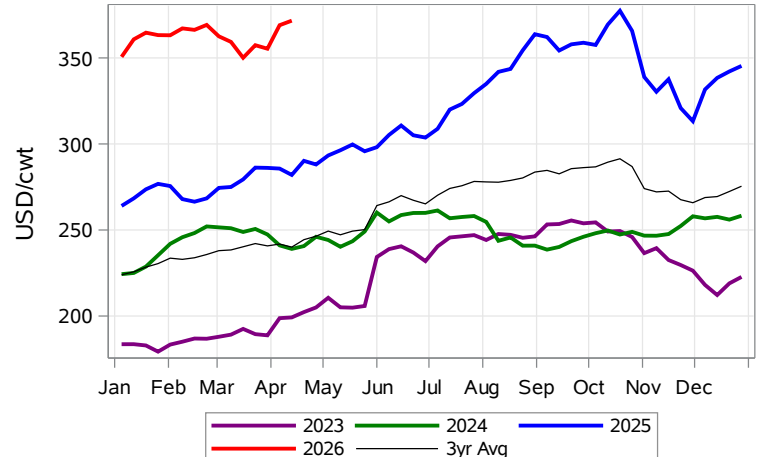
SaskMan Settlement Weight Data (Week of Apr 13)



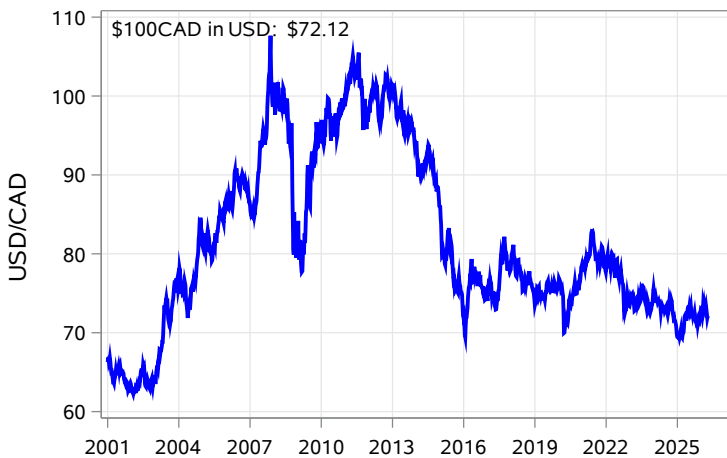
Nearby Feeder Futures Price (Week of Apr 13)



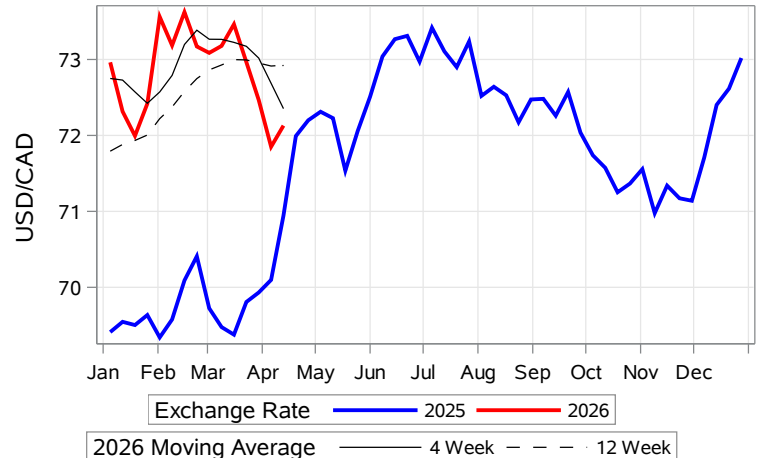
Nearby Feeder Futures Price (Week of Apr 13)



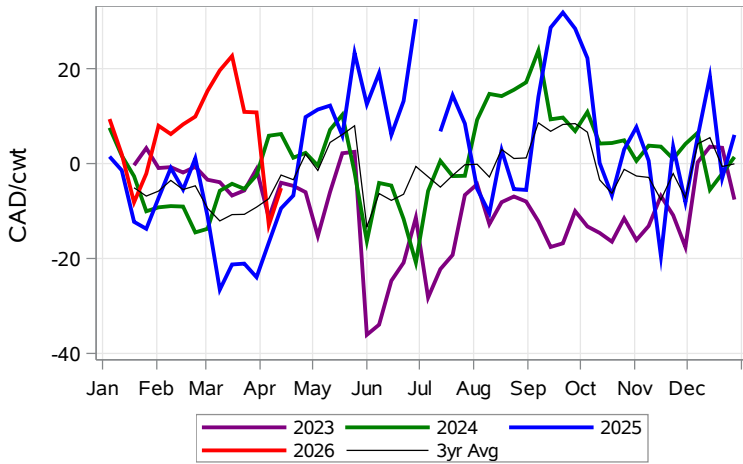
USD/CAD Exchange Rate



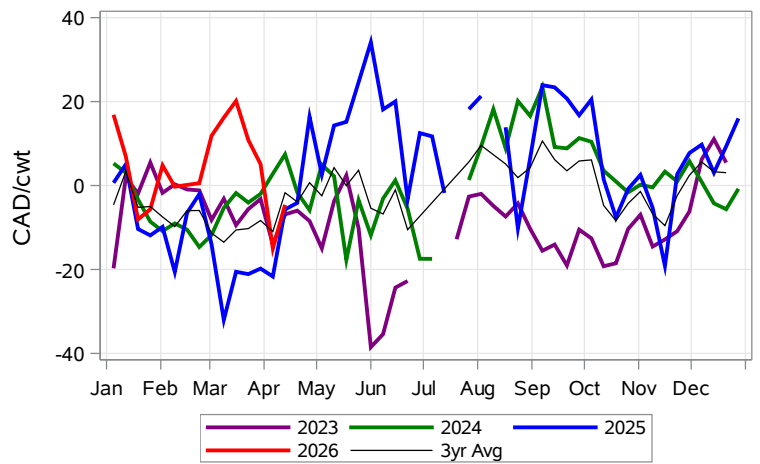
USD/CAD Exchange Rate with Moving Average



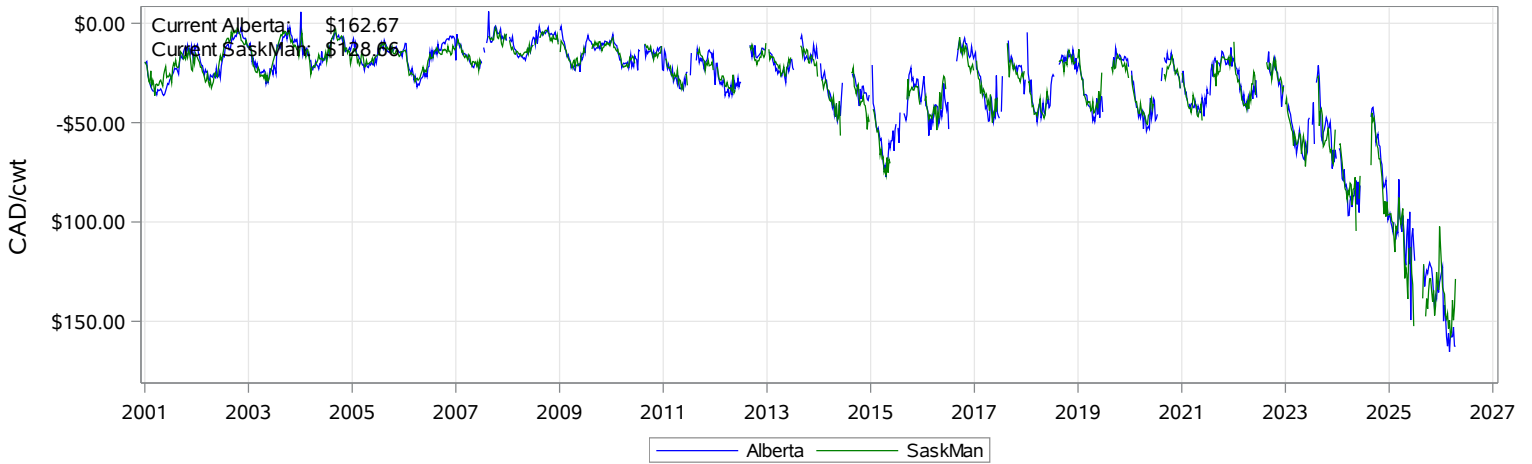
Feeder Cash to Futures Basis Alberta (Week of Apr 13)



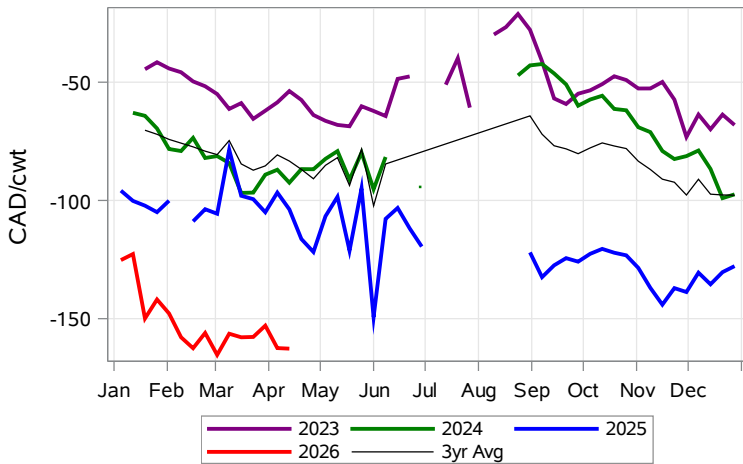
Feeder Cash to Futures Basis SaskMan (Week of Apr 13)



Feeder to Calf Spread (Week of Apr 13)



Feeder to Calf Spread Alberta (Week of Apr 13)



Feeder to Calf Spread SaskMan (Week of Apr 13)

