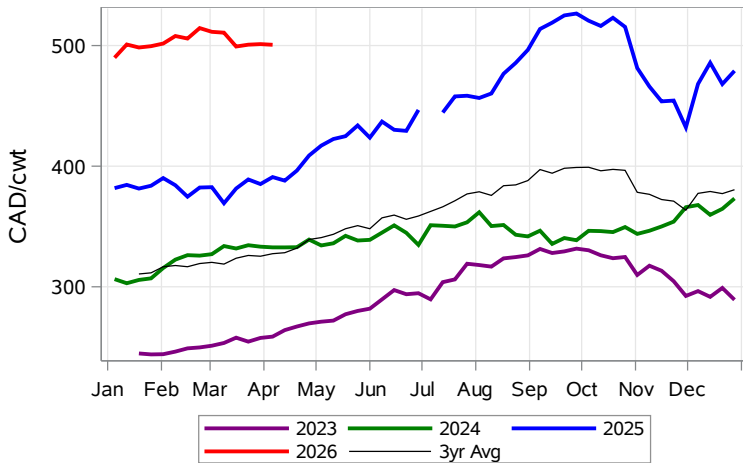


While many factors influence livestock prices, the following are some of the key market indicators that may be helpful when making your LPI purchasing decisions.

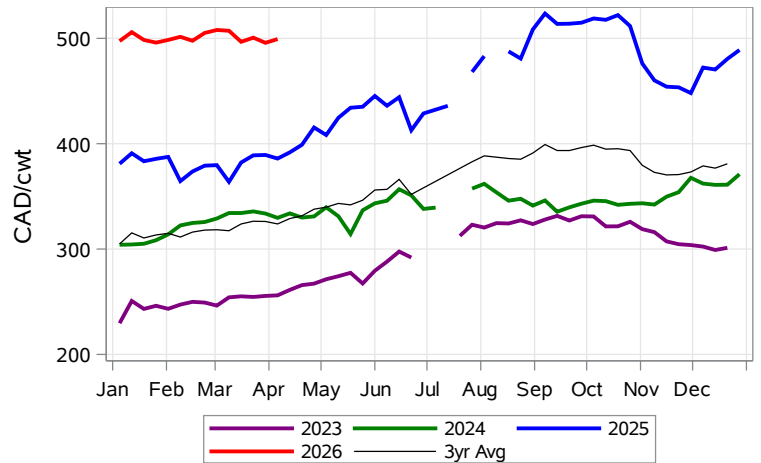
**Feeder Settlement Index (Week of Apr 6)**



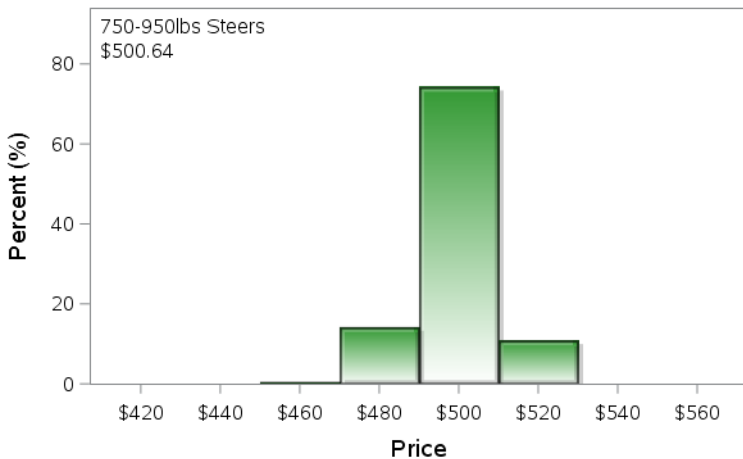
**Feeder Alberta Settlement Index (Week of Apr 6)**



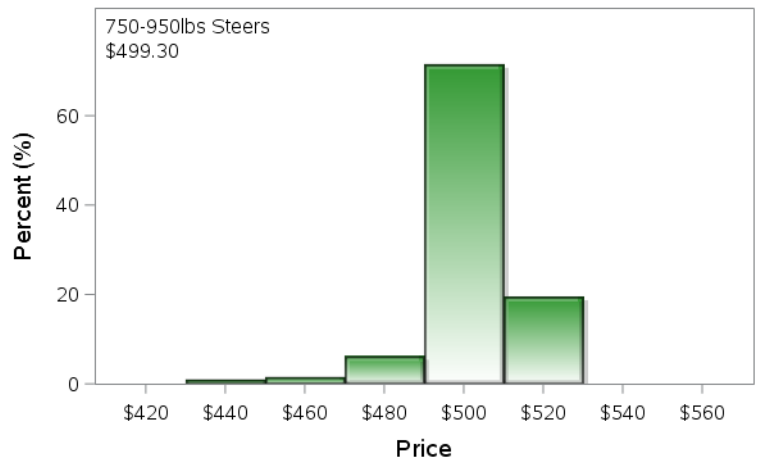
**Feeder SaskMan Settlement Index (Week of Apr 6)**



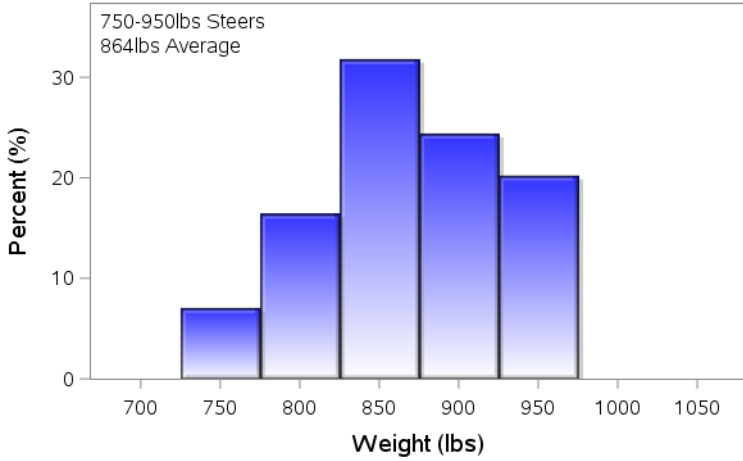
**Alberta Settlement Price Data (Week of Apr 6)**



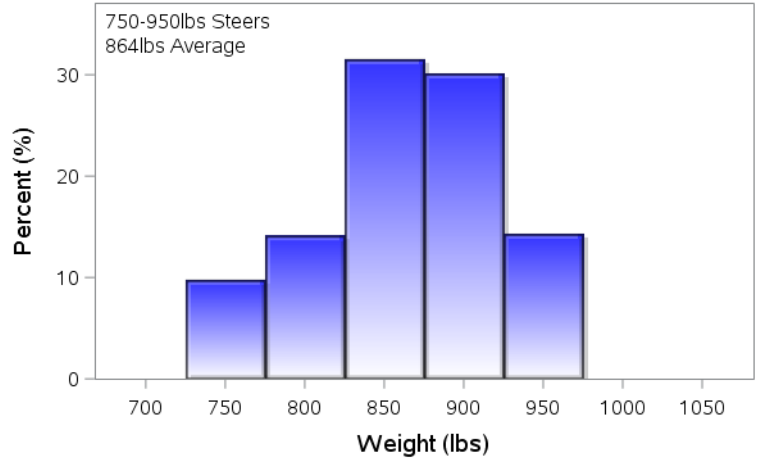
**SaskMan Settlement Price Data (Week of Apr 6)**



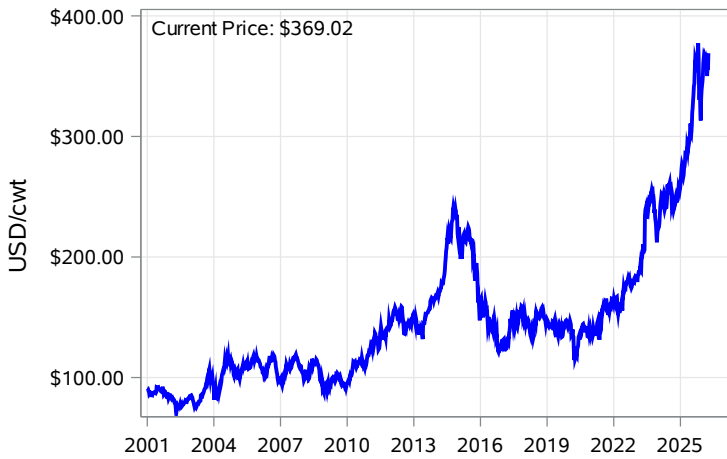
**Alberta Settlement Weight Data (Week of Apr 6)**



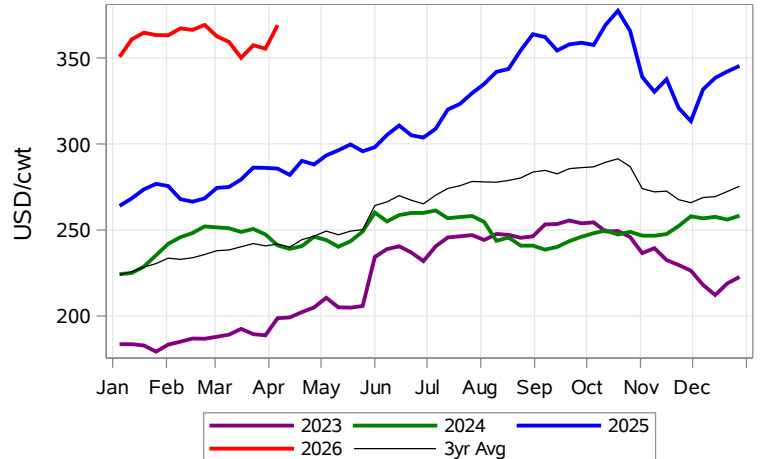
**SaskMan Settlement Weight Data (Week of Apr 6)**



**Nearby Feeder Futures Price (Week of Apr 6)**



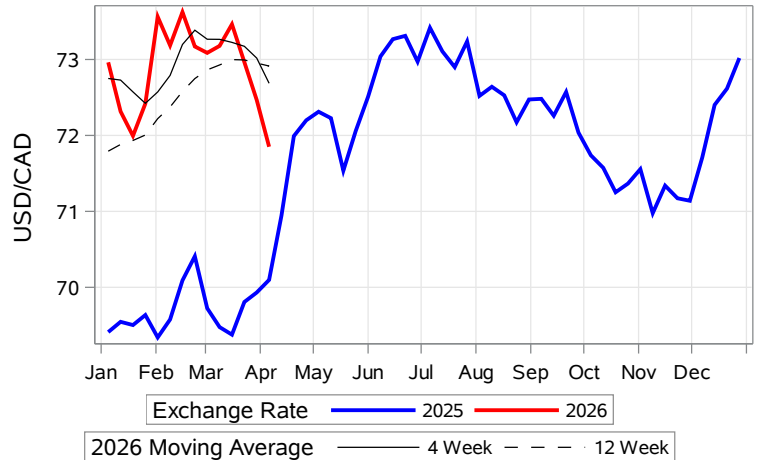
**Nearby Feeder Futures Price (Week of Apr 6)**



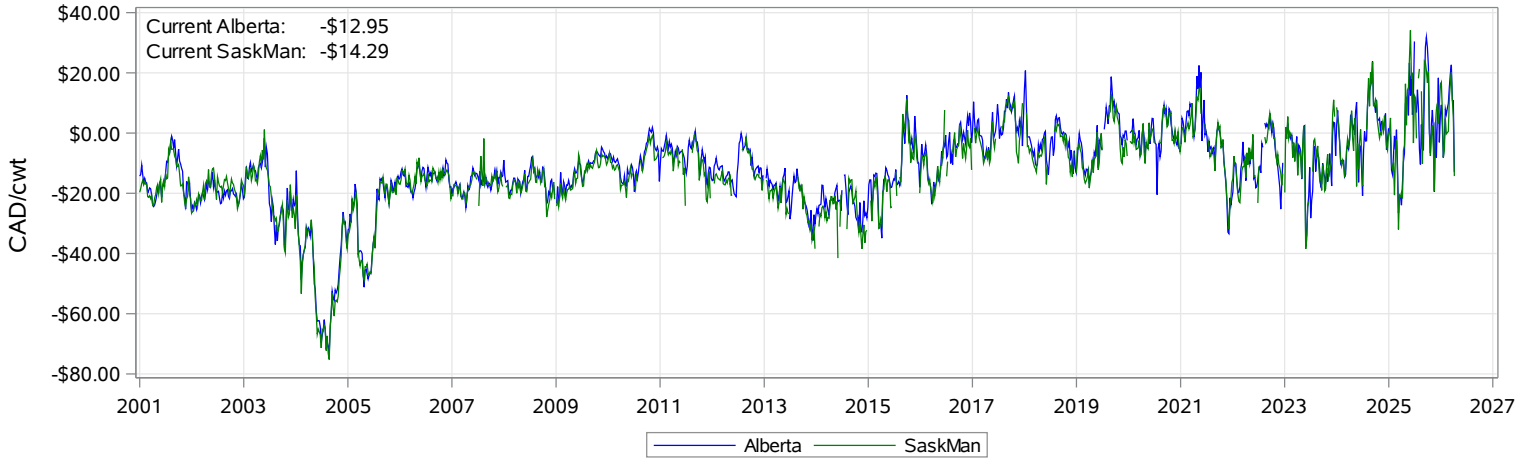
**USD/CAD Exchange Rate**



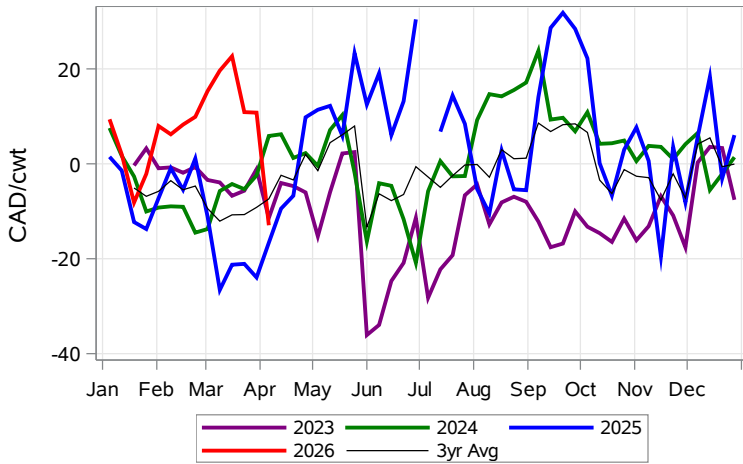
**USD/CAD Exchange Rate with Moving Average**



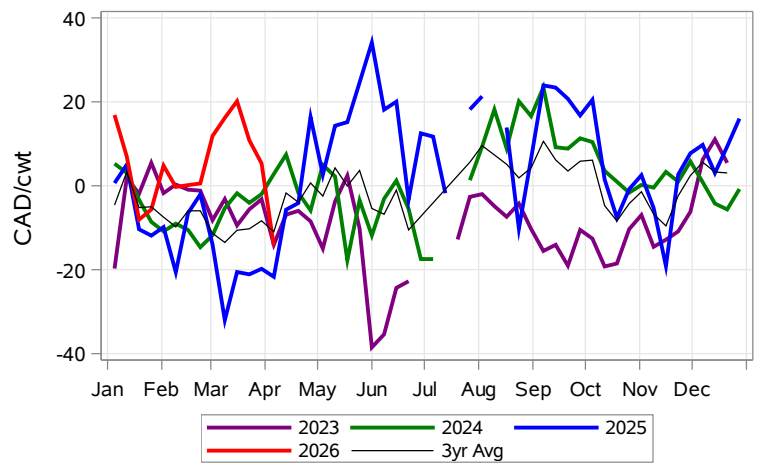
**Feeder Cash to Futures Basis (Week of Apr 6)**



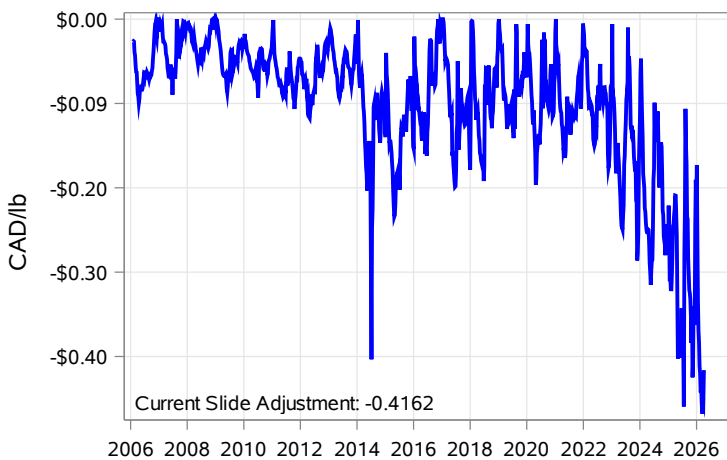
**Feeder Cash to Futures Basis Alberta (Week of Apr 6)**



**Feeder Cash to Futures Basis SaskMan (Week of Apr 6)**



**Slide Adjustment 750-950lbs Alberta (Week of Apr 6)**



**Feeder Slide Adjustment Alberta (Week of Apr 6)**

