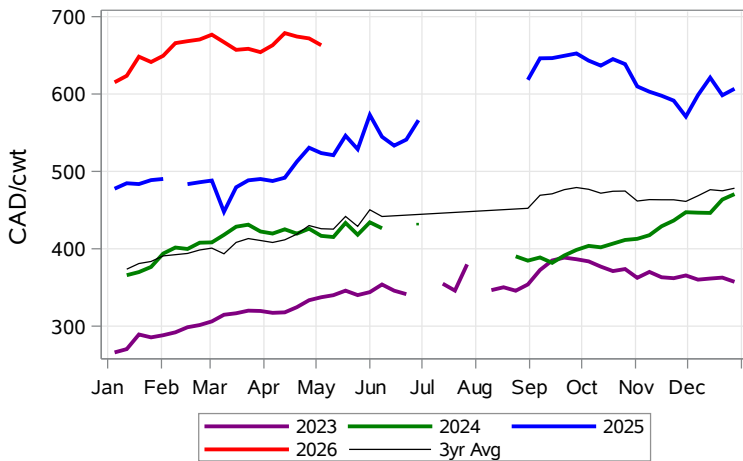


While many factors influence livestock prices, the following are some of the key market indicators that may be helpful when making your LPI purchasing decisions.

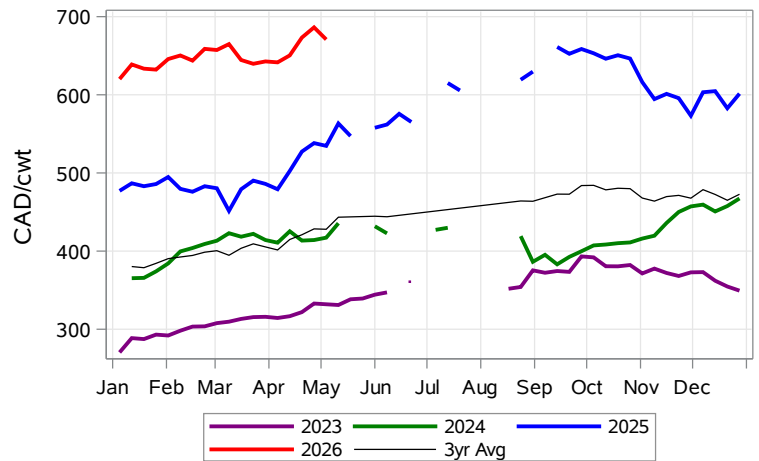
Calf Settlement Index (Week of May 4)



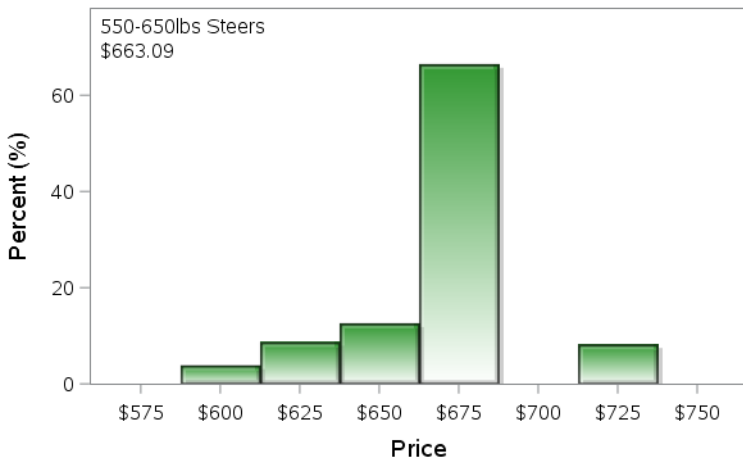
Calf Alberta Settlement Index (Week of May 4)



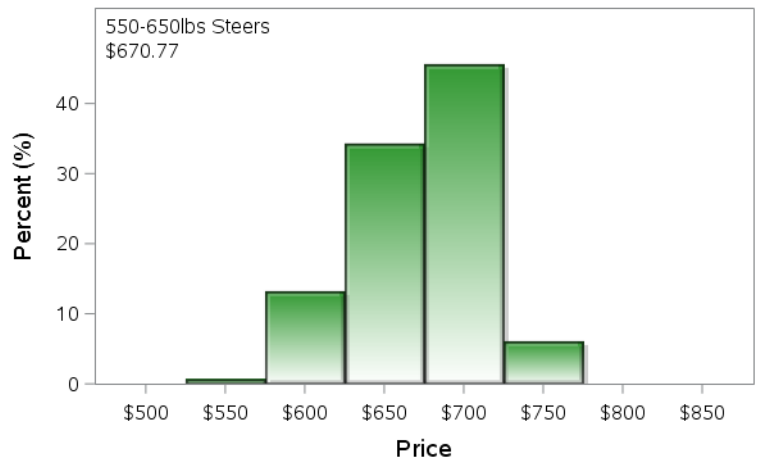
Calf SaskMan Settlement Index (Week of May 4)



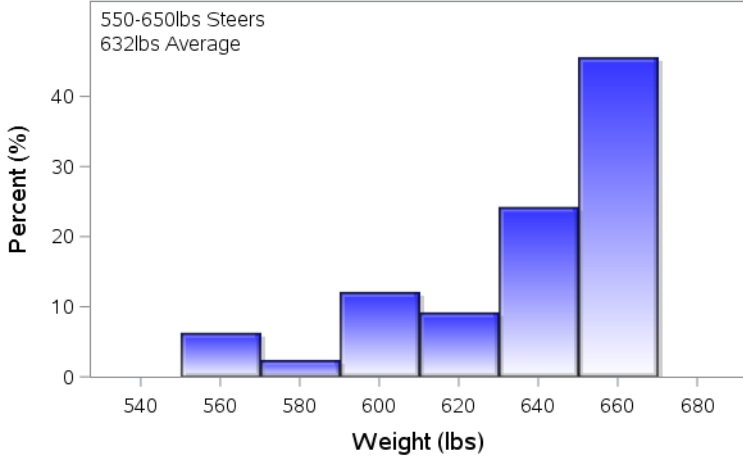
Alberta Settlement Price Data (Week of May 4)



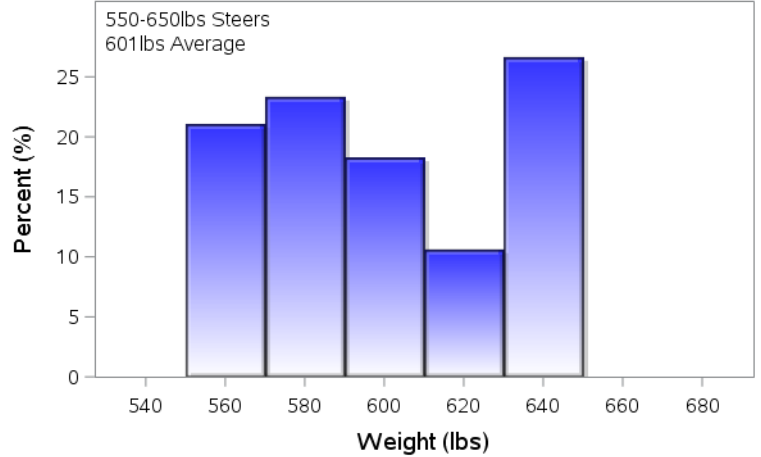
SaskMan Settlement Price Data (Week of May 4)



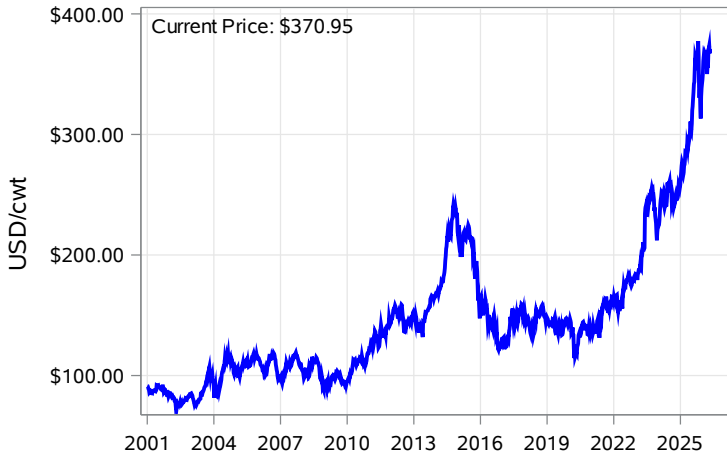
Alberta Settlement Weight Data (Week of May 4)



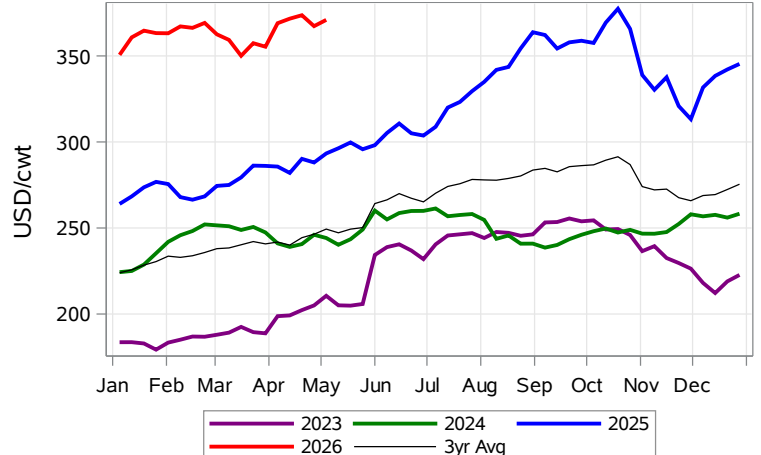
SaskMan Settlement Weight Data (Week of May 4)



Nearby Feeder Futures Price (Week of May 4)



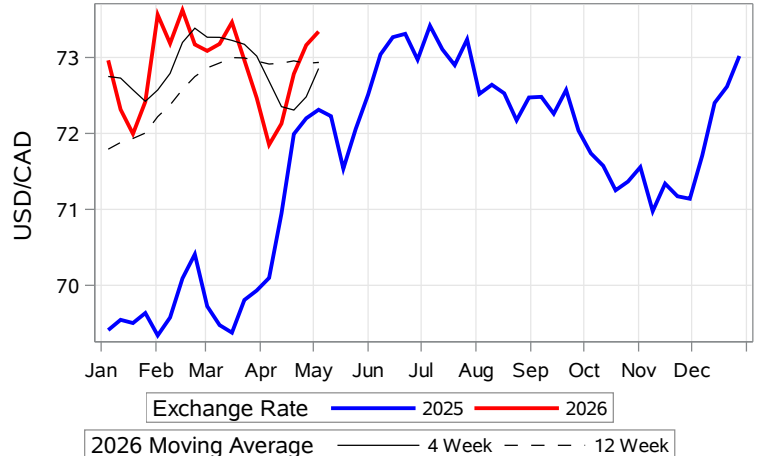
Nearby Feeder Futures Price (Week of May 4)



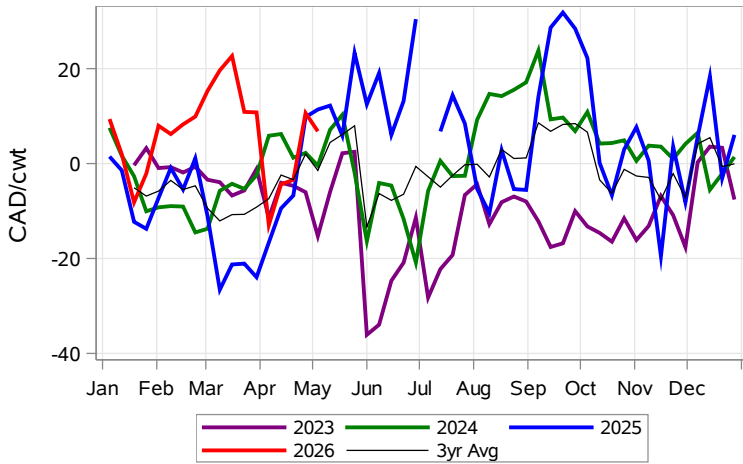
USD/CAD Exchange Rate



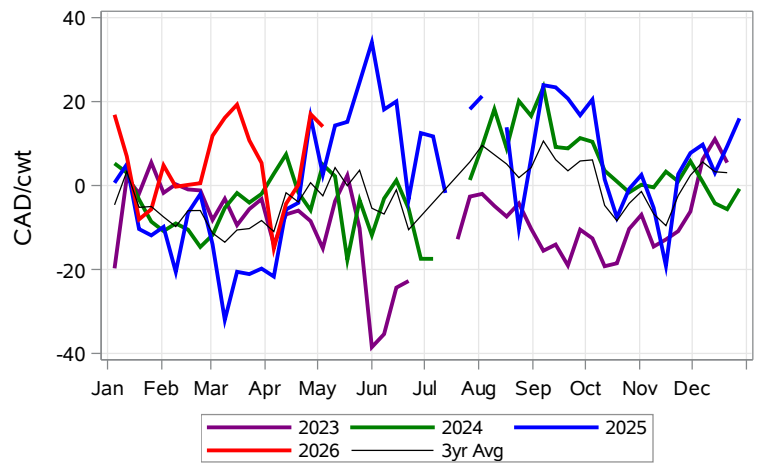
USD/CAD Exchange Rate with Moving Average



Feeder Cash to Futures Basis Alberta (Week of May 4)



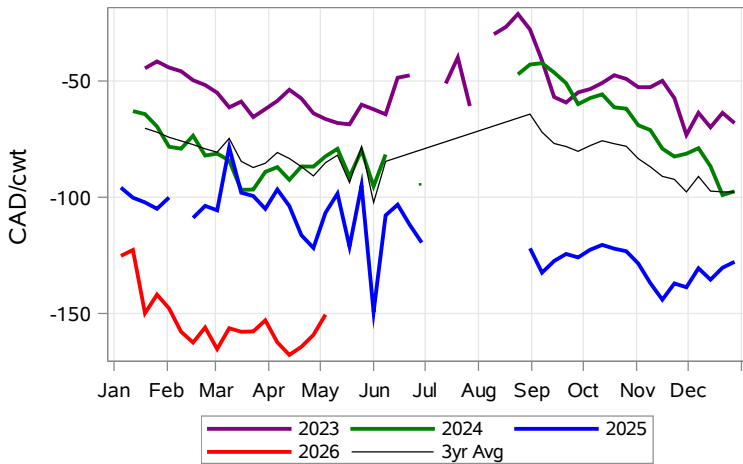
Feeder Cash to Futures Basis SaskMan (Week of May 4)



Feeder to Calf Spread (Week of May 4)



Feeder to Calf Spread Alberta (Week of May 4)



Feeder to Calf Spread SaskMan (Week of May 4)

