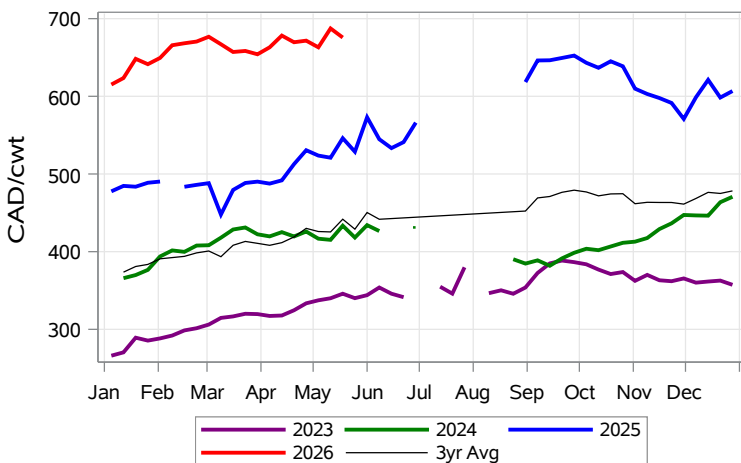


While many factors influence livestock prices, the following are some of the key market indicators that may be helpful when making your LPI purchasing decisions.

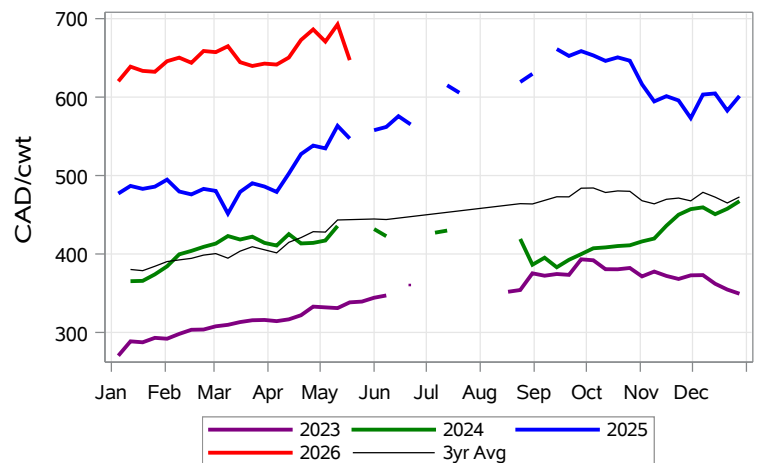
Calf Settlement Index (Week of May 18)



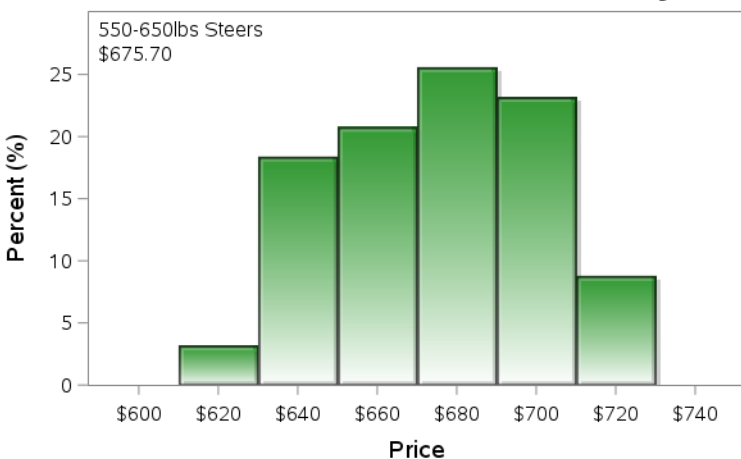
Calf Alberta Settlement Index (Week of May 18)



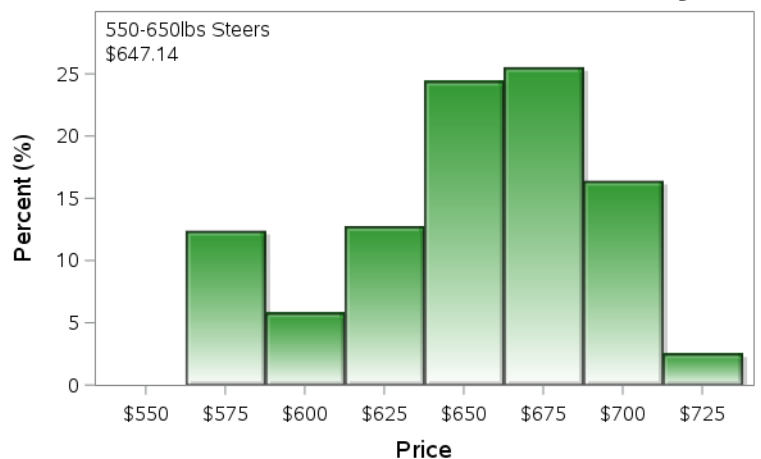
Calf SaskMan Settlement Index (Week of May 18)



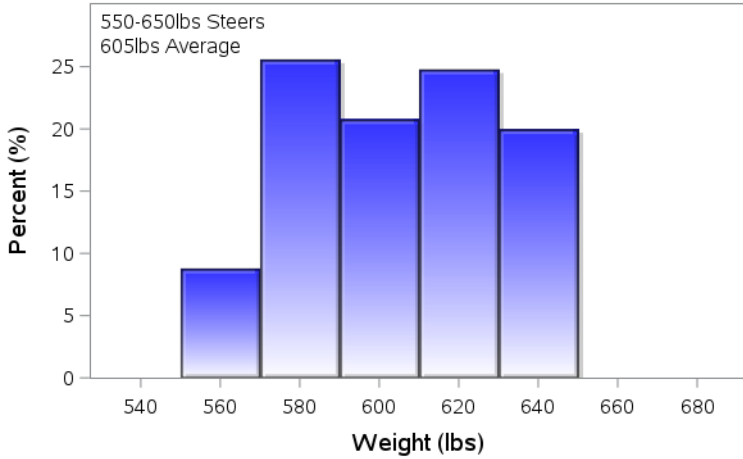
Alberta Settlement Price Data (Week of May 18)



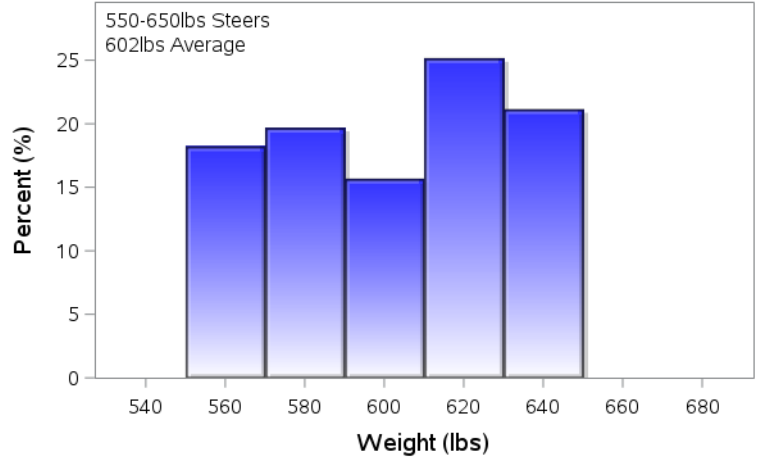
SaskMan Settlement Price Data (Week of May 18)



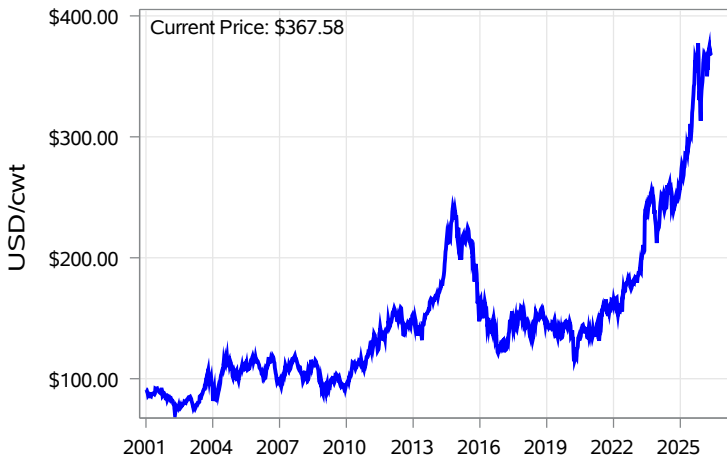
Alberta Settlement Weight Data (Week of May 18)



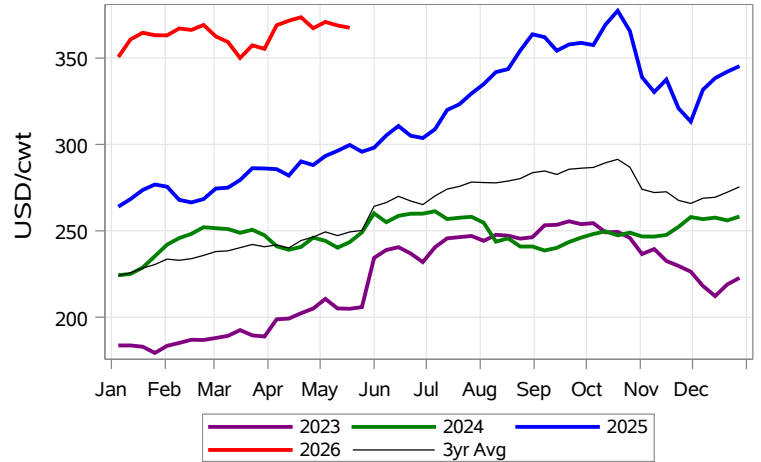
SaskMan Settlement Weight Data (Week of May 18)



Nearby Feeder Futures Price (Week of May 18)



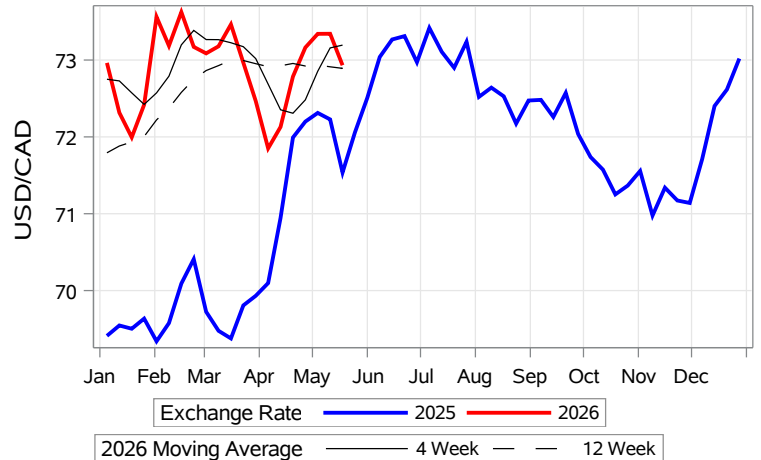
Nearby Feeder Futures Price (Week of May 18)



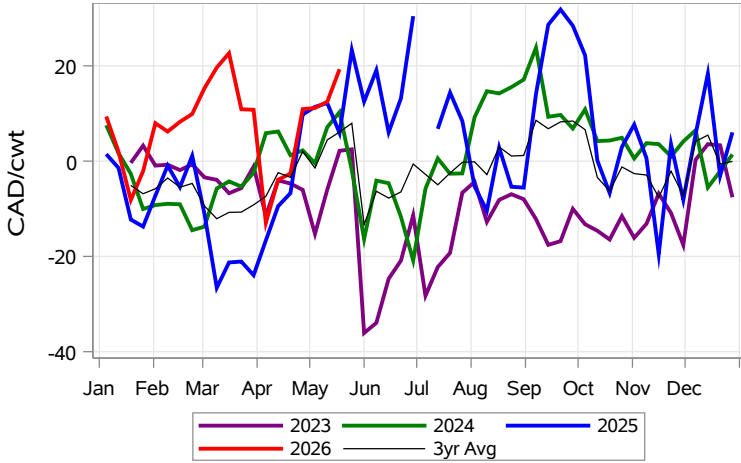
USD/CAD Exchange Rate



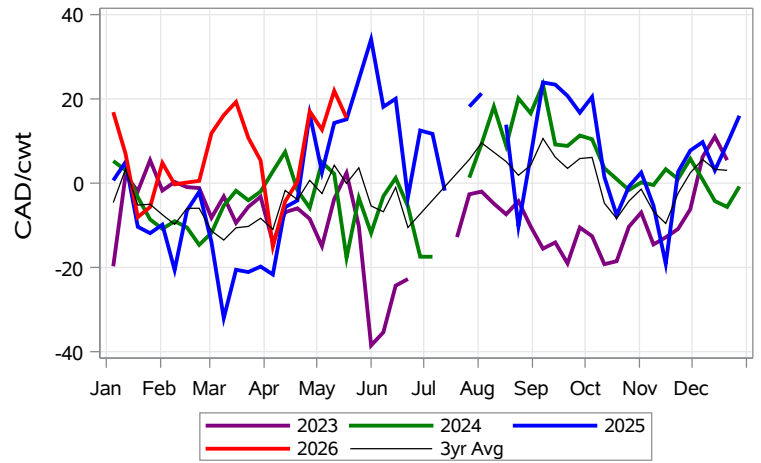
USD/CAD Exchange Rate with Moving Average



Feeder Cash to Futures Basis Alberta (Week of May 18)



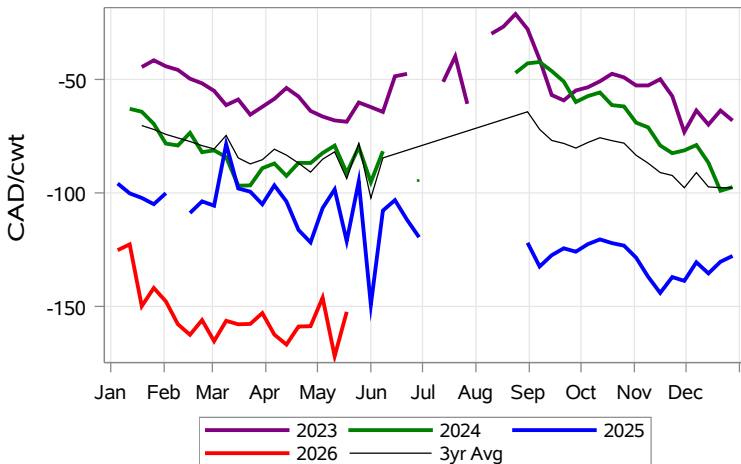
Feeder Cash to Futures Basis SaskMan (Week of May 18)



Feeder to Calf Spread (Week of May 18)



Feeder to Calf Spread Alberta (Week of May 18)



Feeder to Calf Spread SaskMan (Week of May 18)

