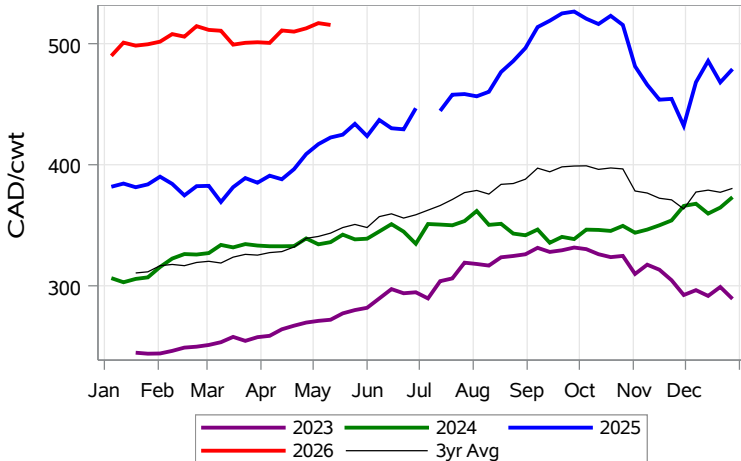


While many factors influence livestock prices, the following are some of the key market indicators that may be helpful when making your LPI purchasing decisions.

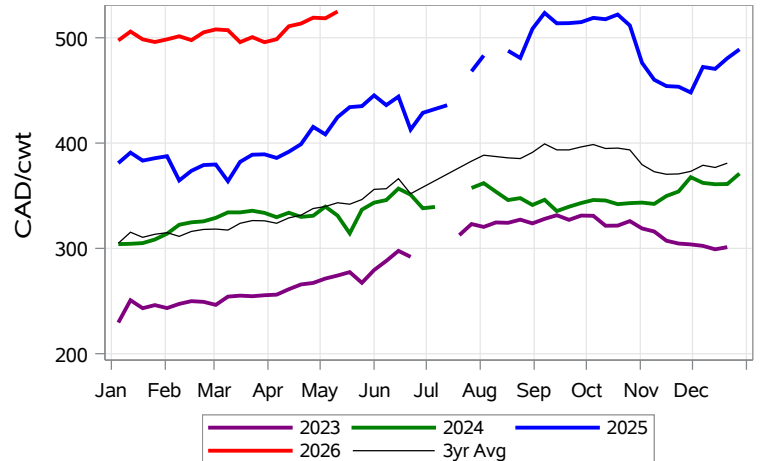
Feeder Settlement Index (Week of May 11)



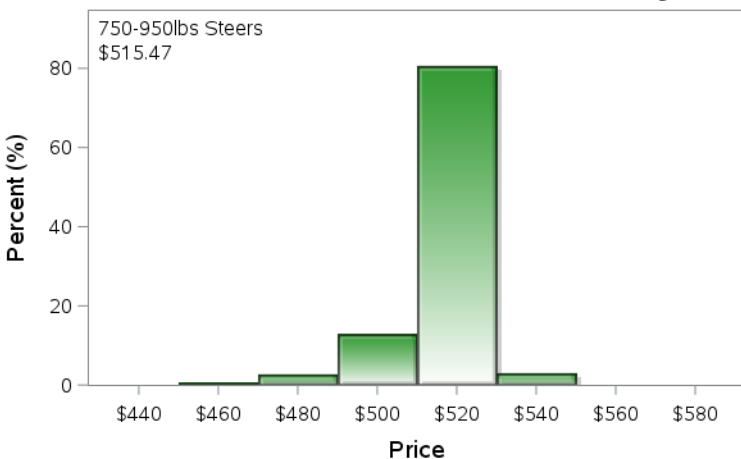
Feeder Alberta Settlement Index (Week of May 11)



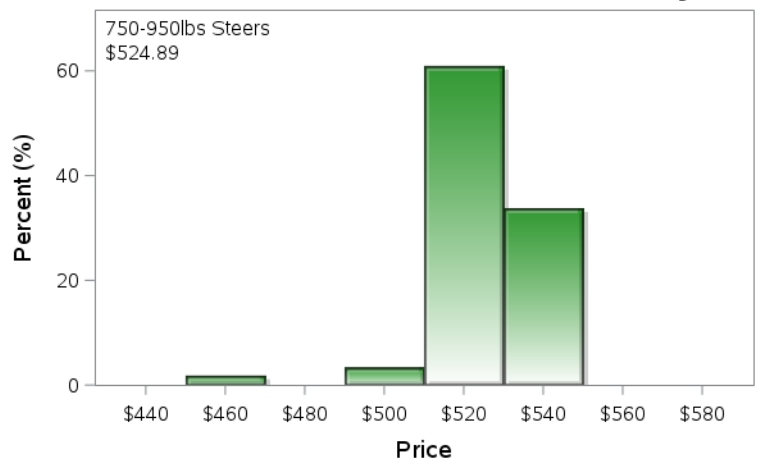
Feeder SaskMan Settlement Index (Week of May 11)



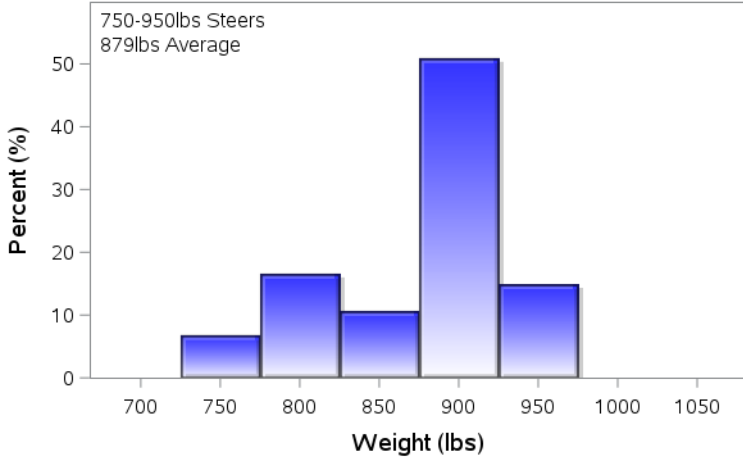
Alberta Settlement Price Data (Week of May 11)



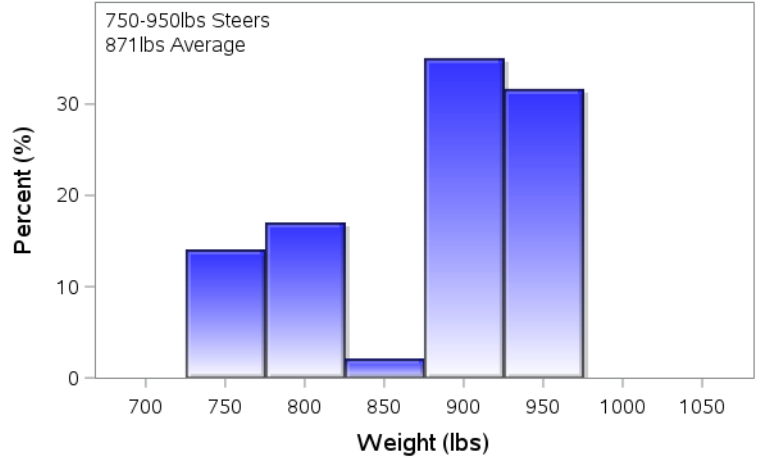
SaskMan Settlement Price Data (Week of May 11)



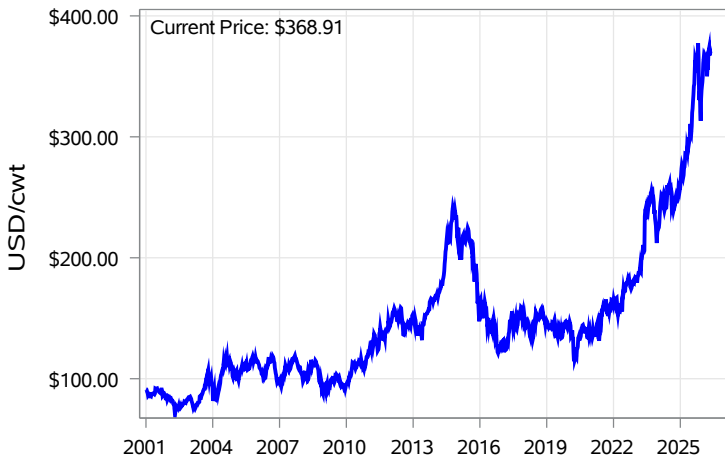
Alberta Settlement Weight Data (Week of May 11)



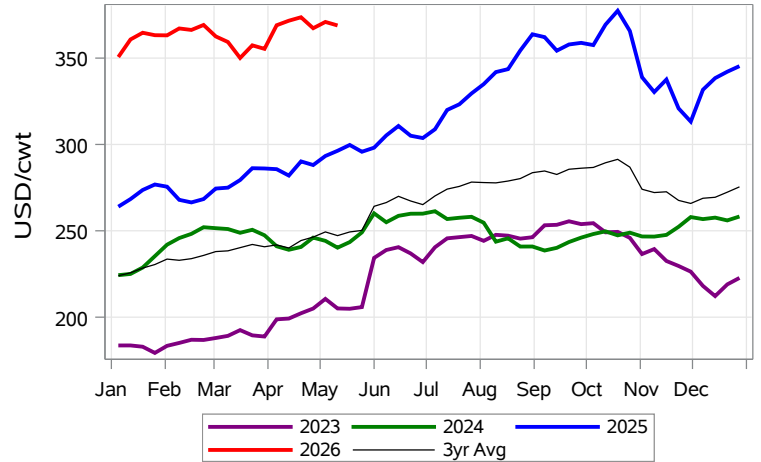
SaskMan Settlement Weight Data (Week of May 11)



Nearby Feeder Futures Price (Week of May 11)



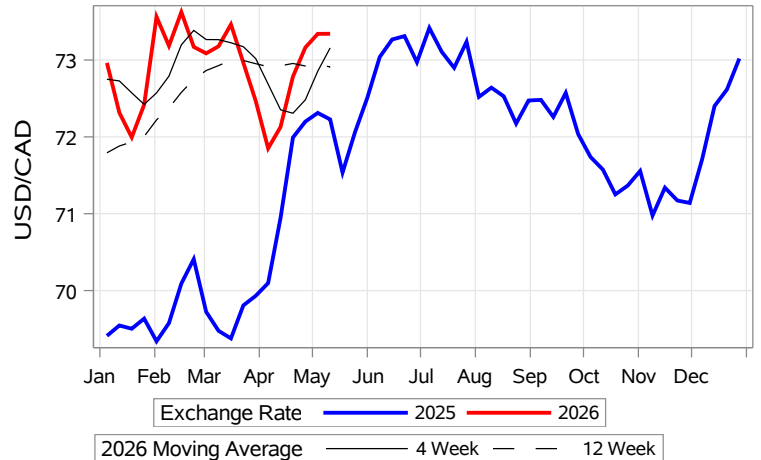
Nearby Feeder Futures Price (Week of May 11)



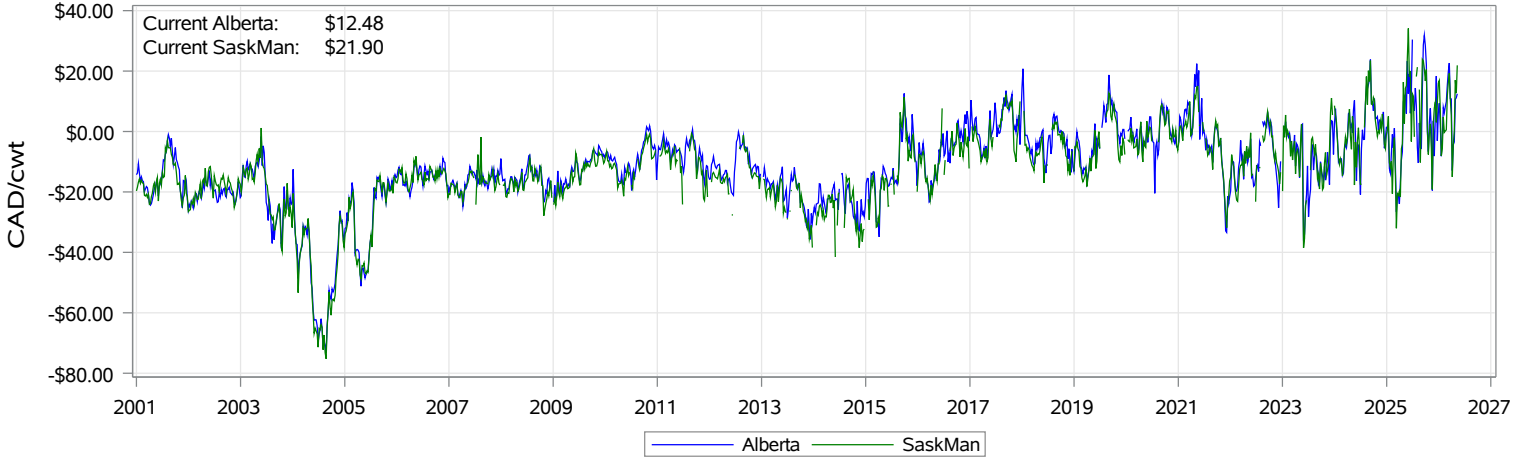
USD/CAD Exchange Rate



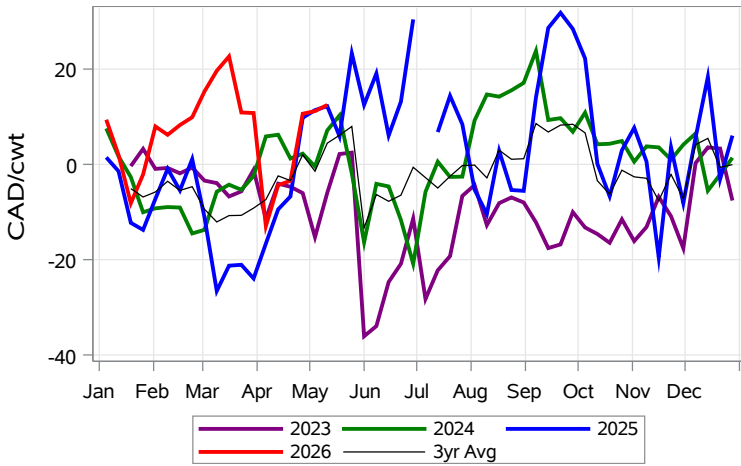
USD/CAD Exchange Rate with Moving Average



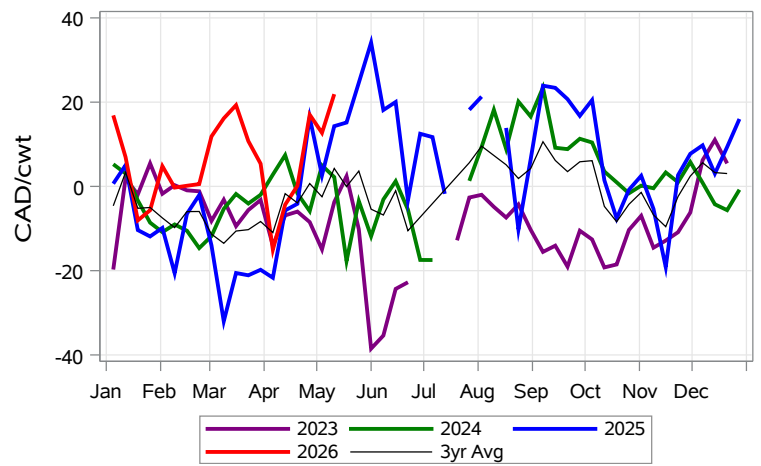
Feeder Cash to Futures Basis (Week of May 11)



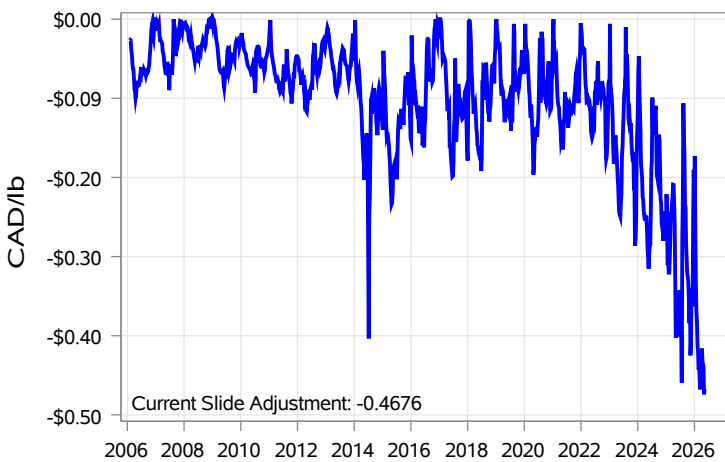
Feeder Cash to Futures Basis Alberta (Week of May 11)



Feeder Cash to Futures Basis SaskMan (Week of May 11)



Slide Adjustment 750-950lbs Alberta (Week of May 11)



Feeder Slide Adjustment Alberta (Week of May 11)

