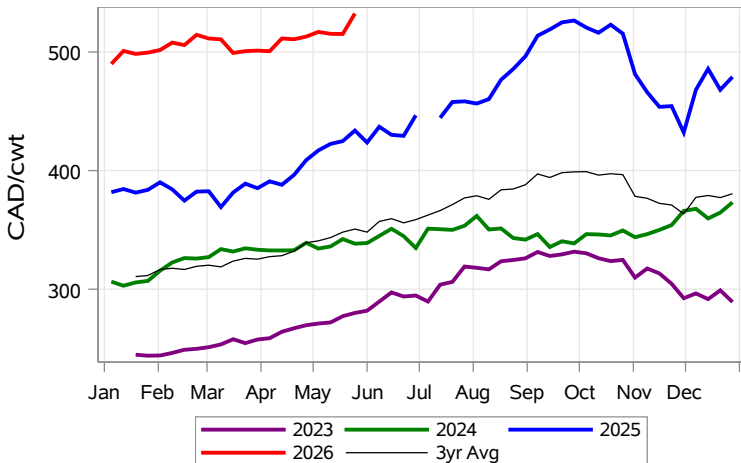


While many factors influence livestock prices, the following are some of the key market indicators that may be helpful when making your LPI purchasing decisions.

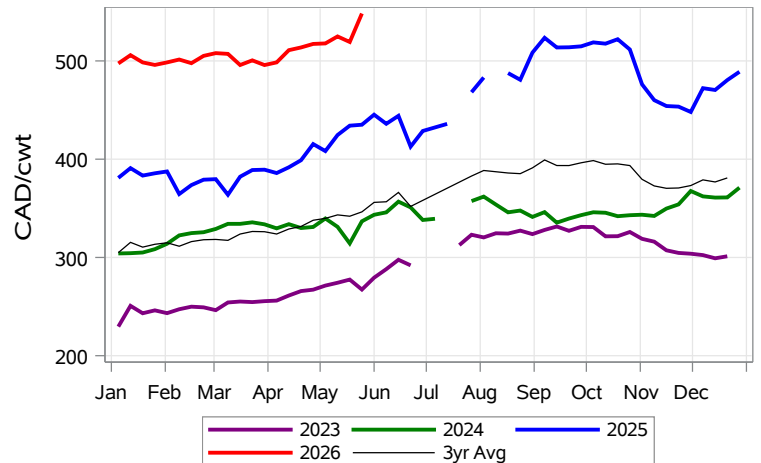
Feeder Settlement Index (Week of May 25)



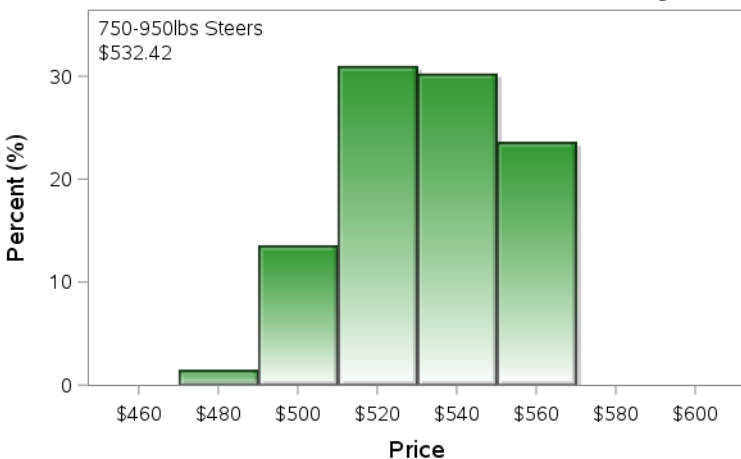
Feeder Alberta Settlement Index (Week of May 25)



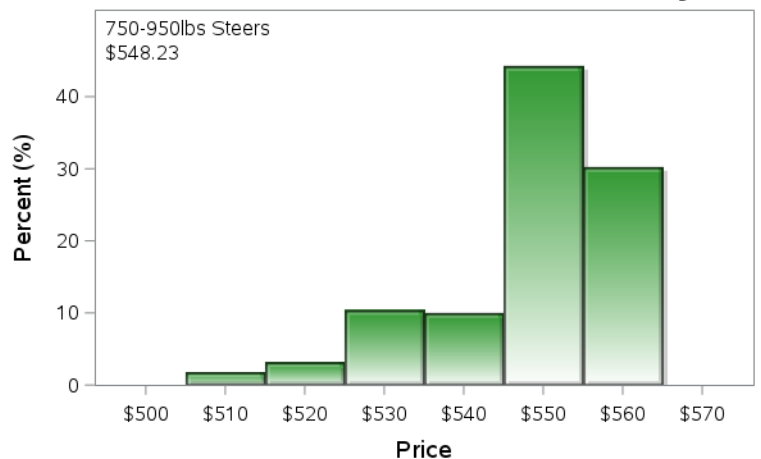
Feeder SaskMan Settlement Index (Week of May 25)



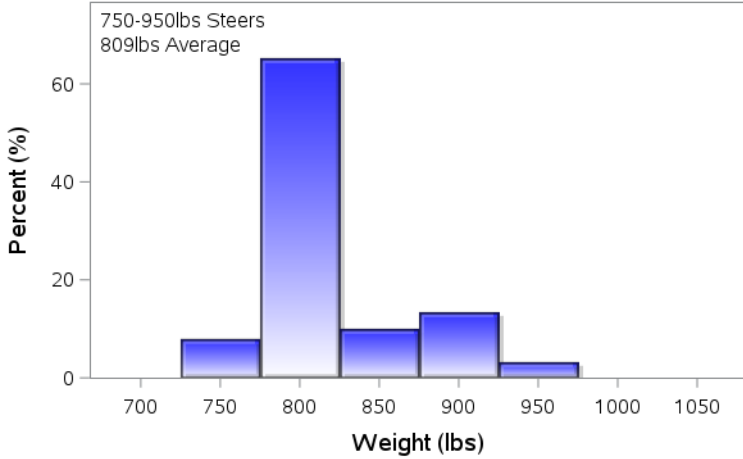
Alberta Settlement Price Data (Week of May 25)



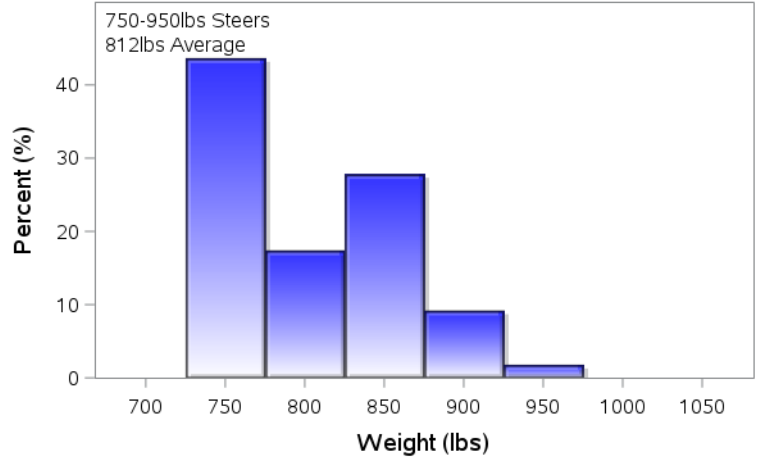
SaskMan Settlement Price Data (Week of May 25)



Alberta Settlement Weight Data (Week of May 25)



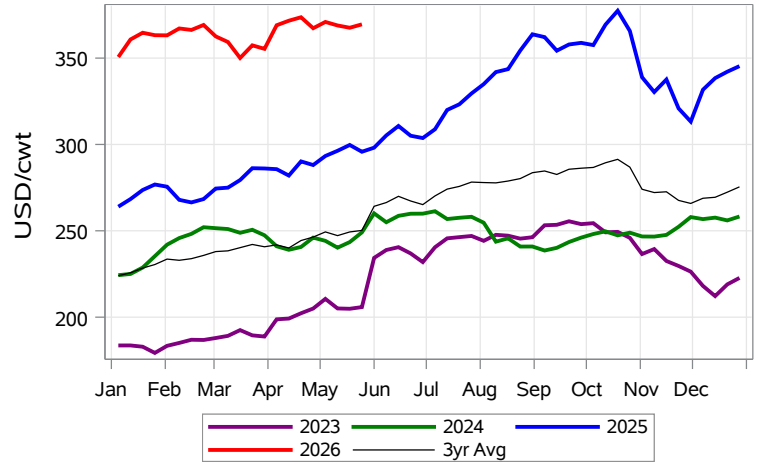
SaskMan Settlement Weight Data (Week of May 25)



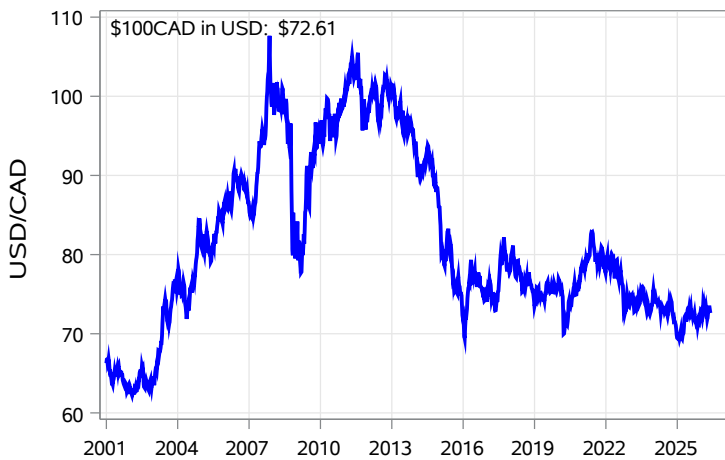
Nearby Feeder Futures Price (Week of May 25)



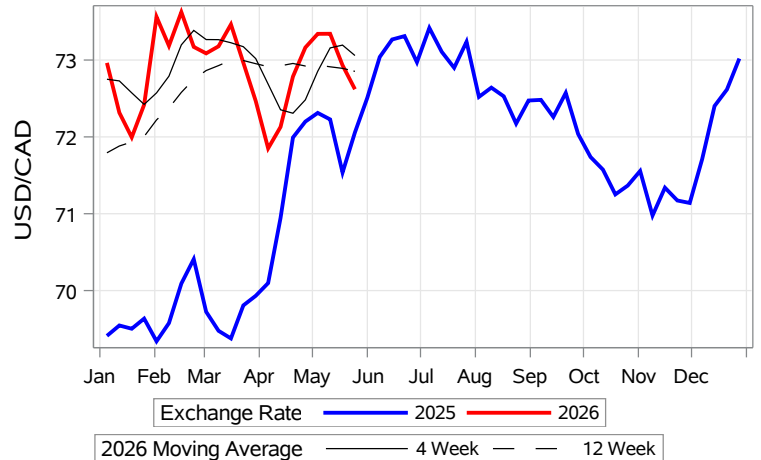
Nearby Feeder Futures Price (Week of May 25)



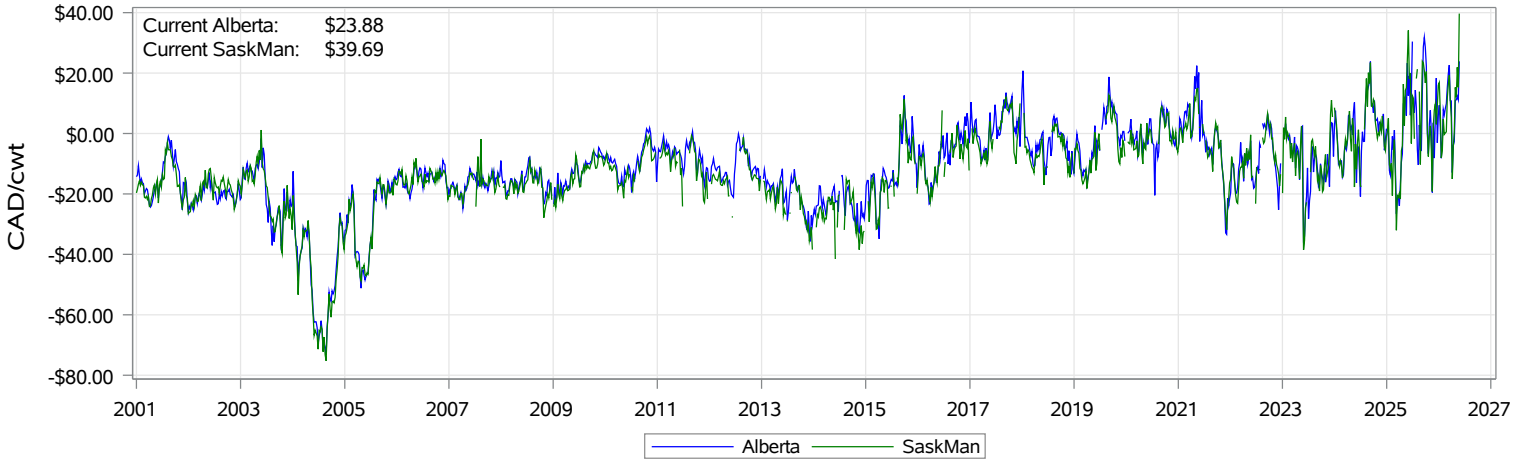
USD/CAD Exchange Rate



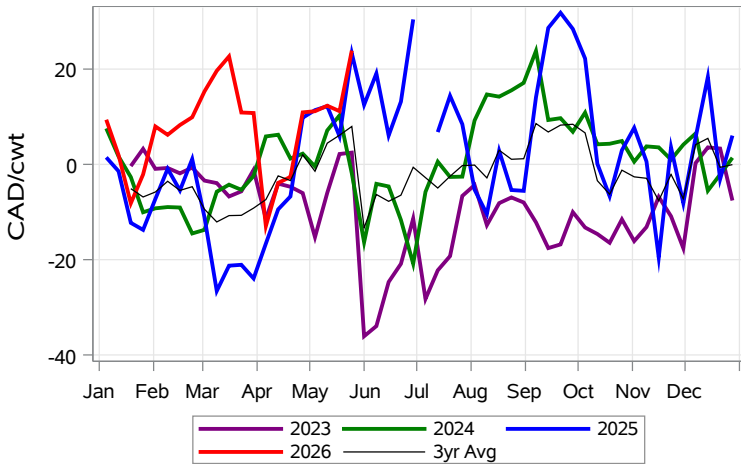
USD/CAD Exchange Rate with Moving Average



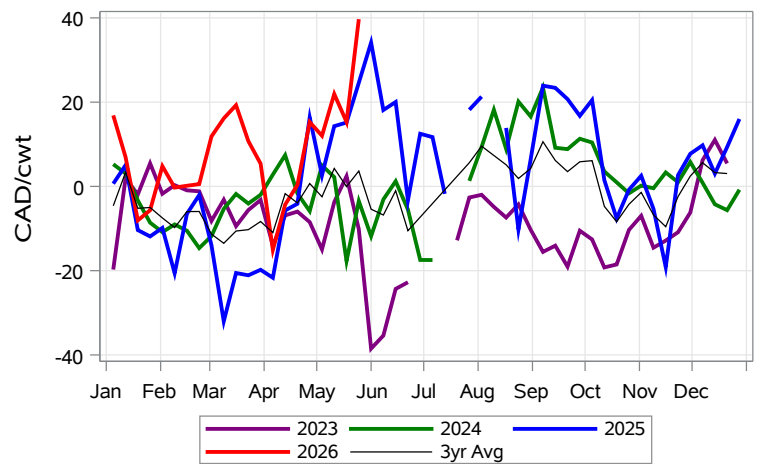
Feeder Cash to Futures Basis (Week of May 25)



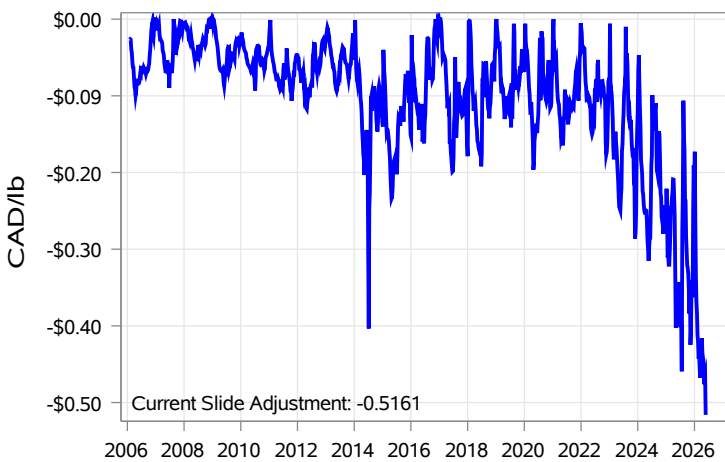
Feeder Cash to Futures Basis Alberta (Week of May 25)



Feeder Cash to Futures Basis SaskMan (Week of May 25)



Slide Adjustment 750-950lbs Alberta (Week of May 25)



Feeder Slide Adjustment Alberta (Week of May 25)

