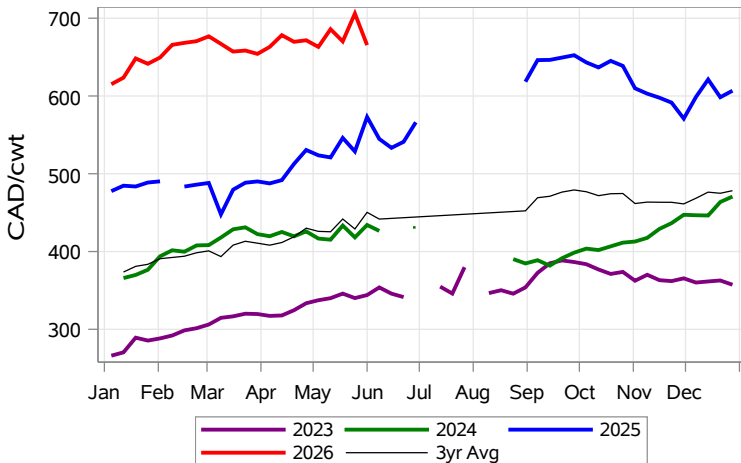


While many factors influence livestock prices, the following are some of the key market indicators that may be helpful when making your LPI purchasing decisions.

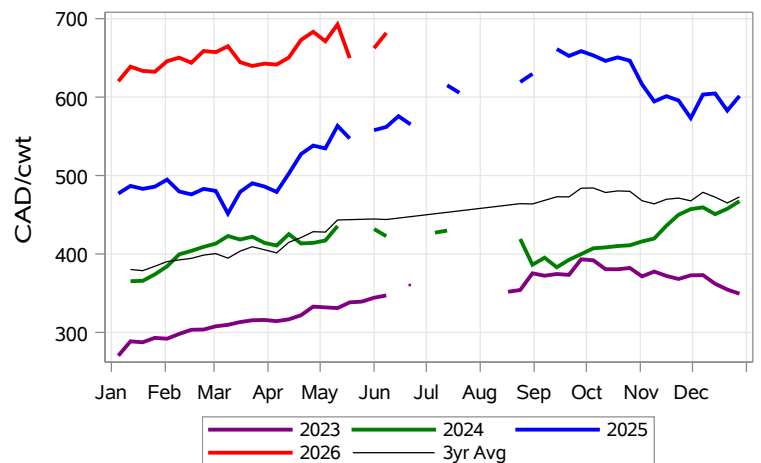
Calf Settlement Index (Week of Jun 15)



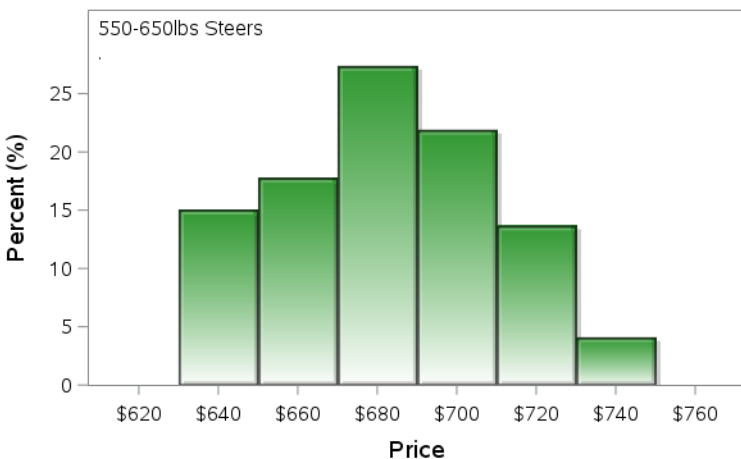
Calf Alberta Settlement Index (Week of Jun 15)



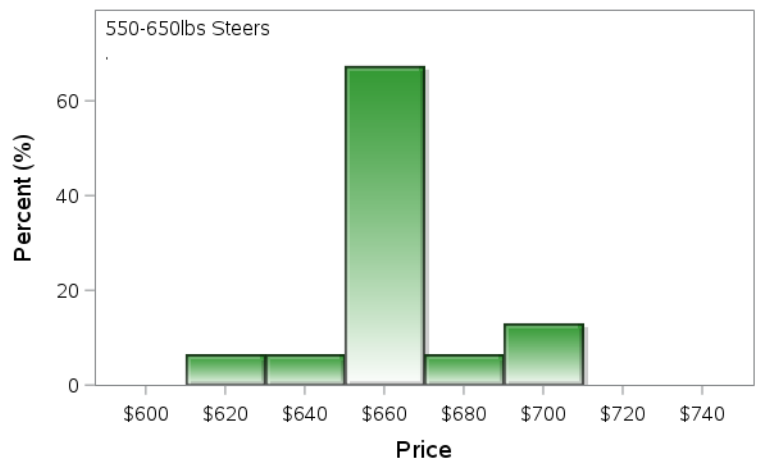
Calf SaskMan Settlement Index (Week of Jun 15)



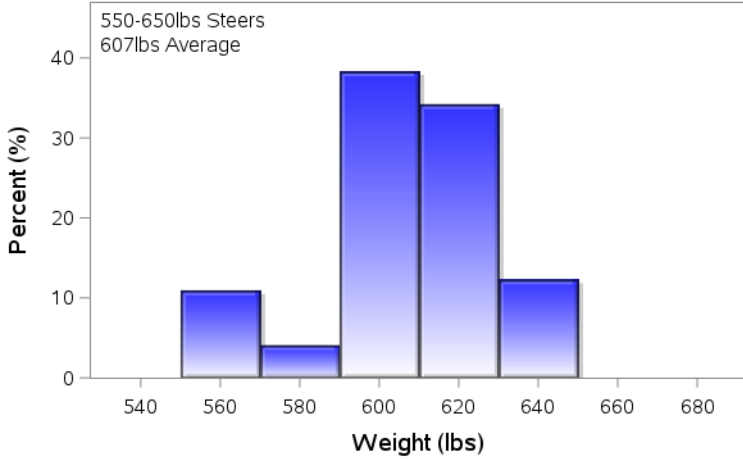
Alberta Settlement Price Data (Week of Jun 15)



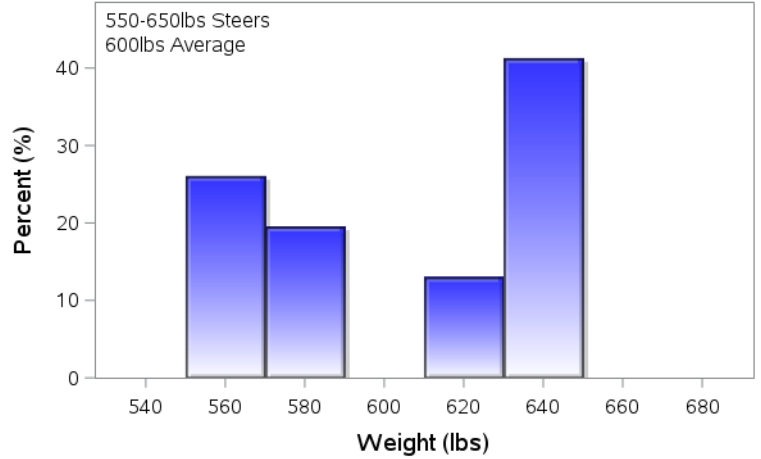
SaskMan Settlement Price Data (Week of Jun 15)



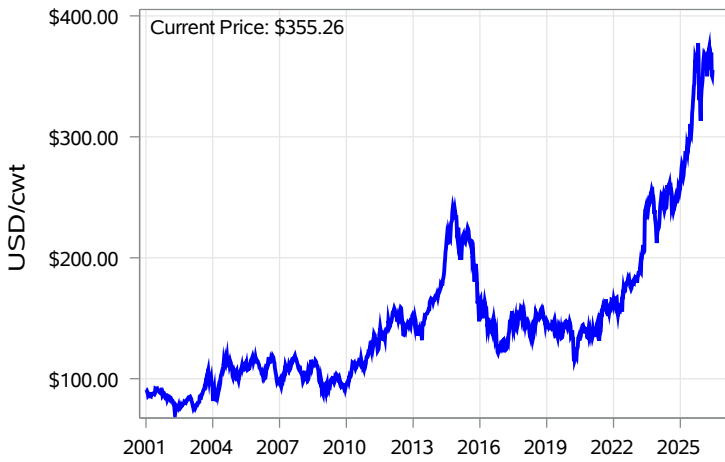
Alberta Settlement Weight Data (Week of Jun 15)



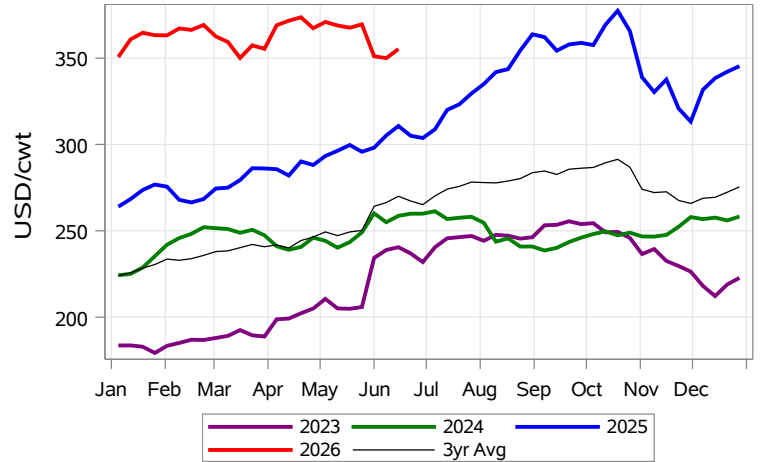
SaskMan Settlement Weight Data (Week of Jun 15)



Nearby Feeder Futures Price (Week of Jun 15)



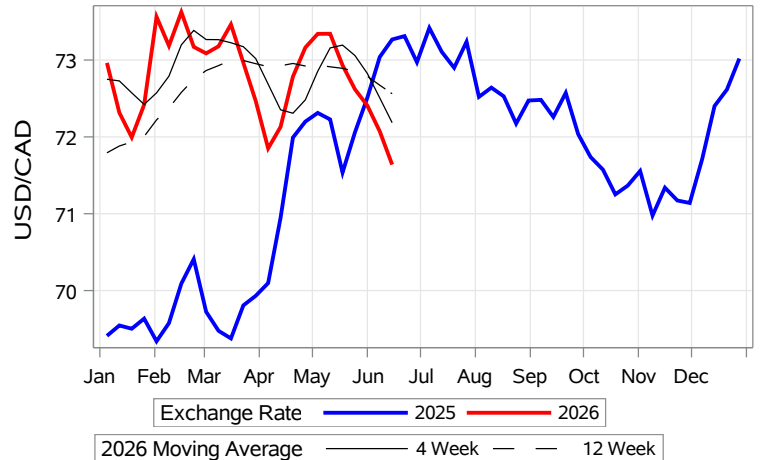
Nearby Feeder Futures Price (Week of Jun 15)



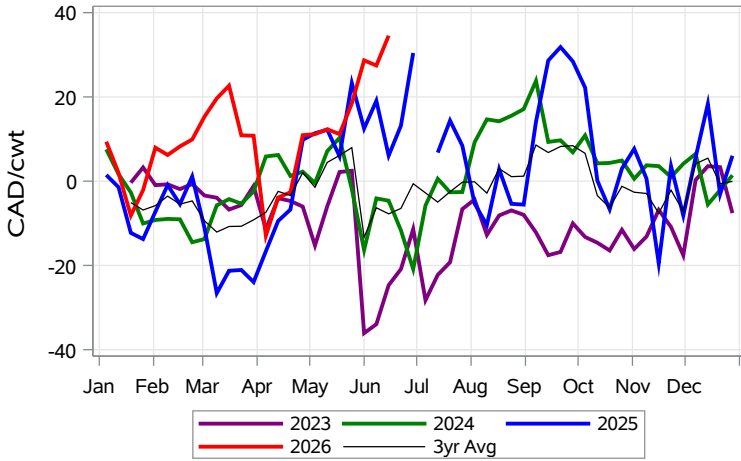
USD/CAD Exchange Rate



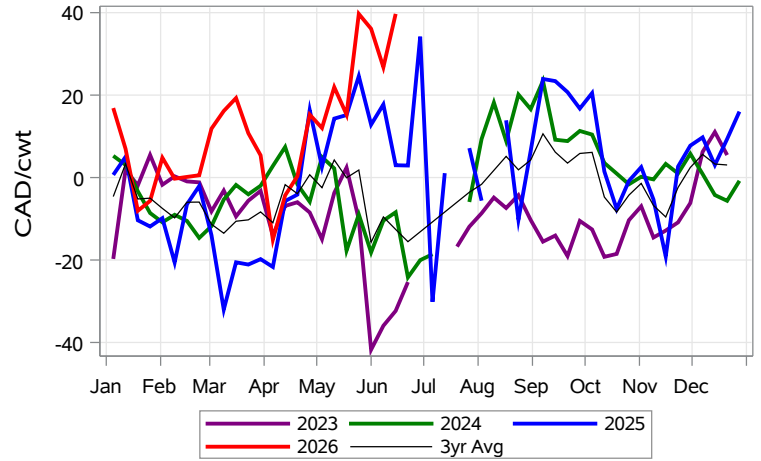
USD/CAD Exchange Rate with Moving Average



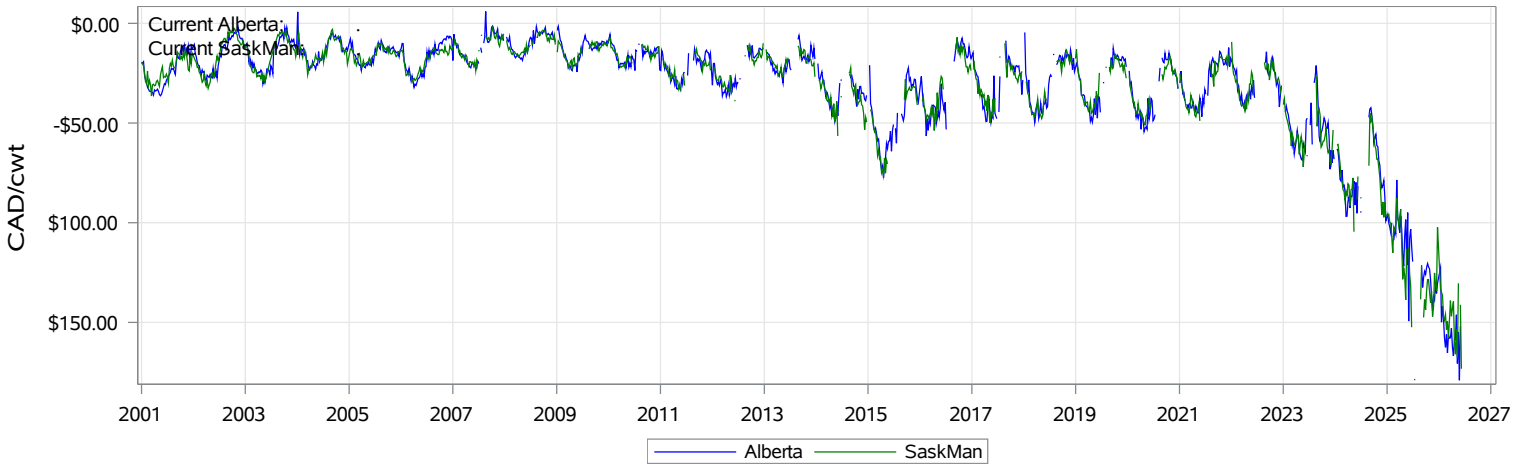
Feeder Cash to Futures Basis Alberta (Week of Jun 15)



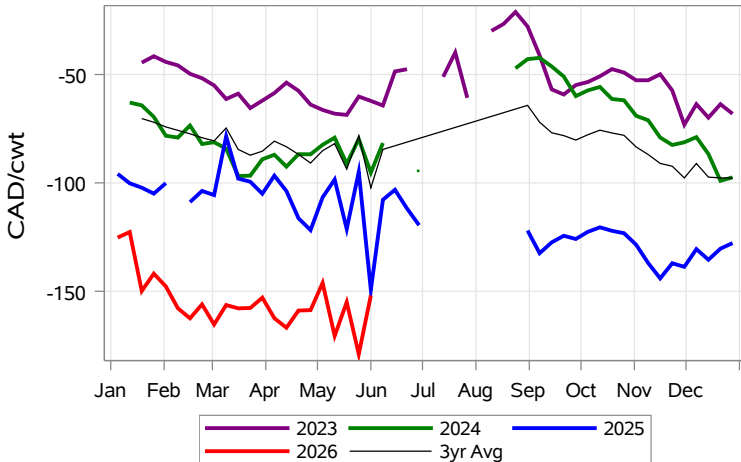
Feeder Cash to Futures Basis SaskMan (Week of Jun 15)



Feeder to Calf Spread (Week of Jun 15)



Feeder to Calf Spread Alberta (Week of Jun 15)



Feeder to Calf Spread SaskMan (Week of Jun 15)

