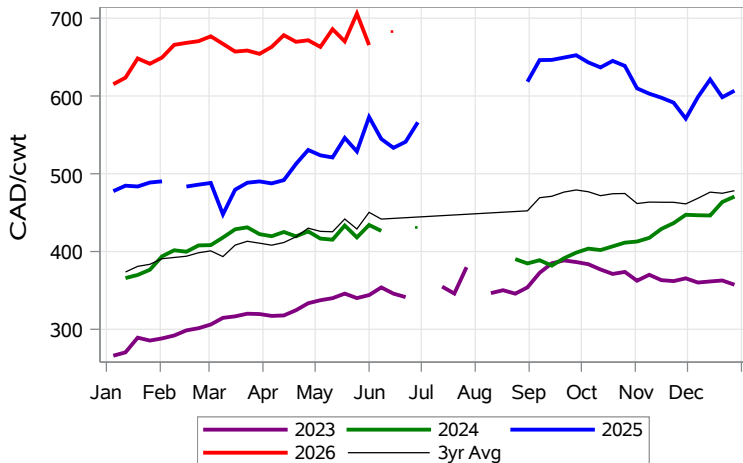


While many factors influence livestock prices, the following are some of the key market indicators that may be helpful when making your LPI purchasing decisions.

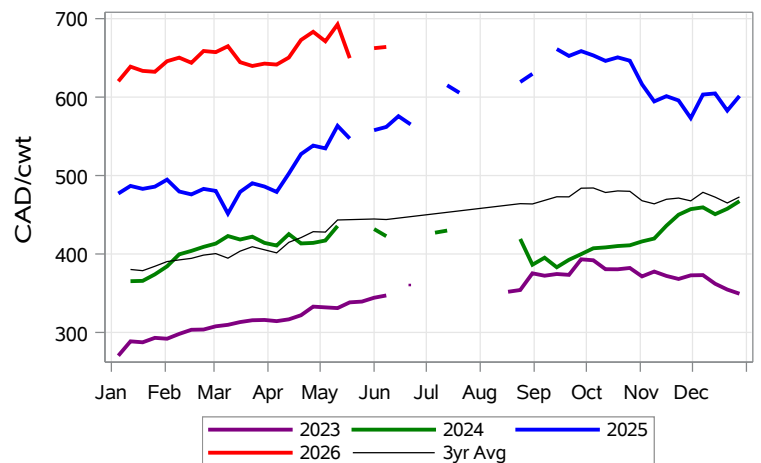
Calf Settlement Index (Week of Jun 29)



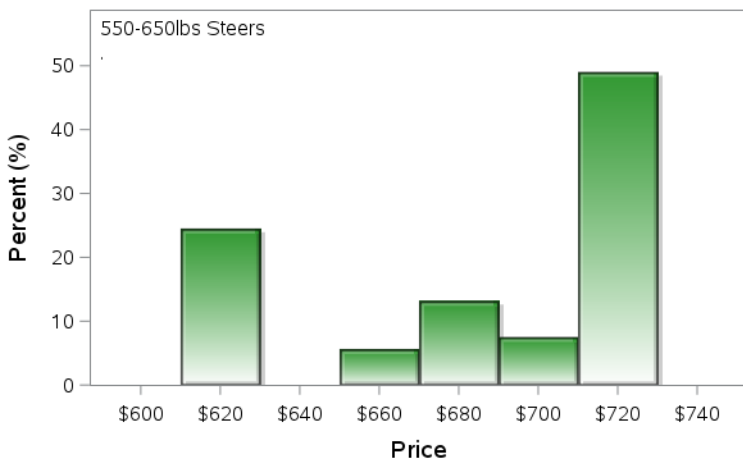
Calf Alberta Settlement Index (Week of Jun 29)



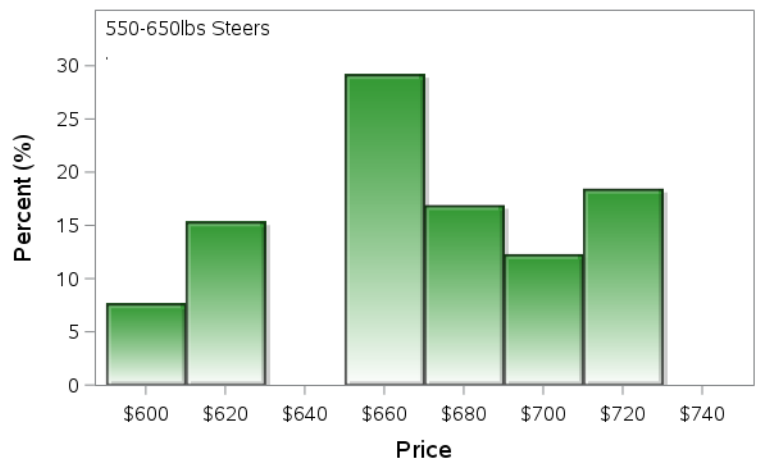
Calf SaskMan Settlement Index (Week of Jun 29)



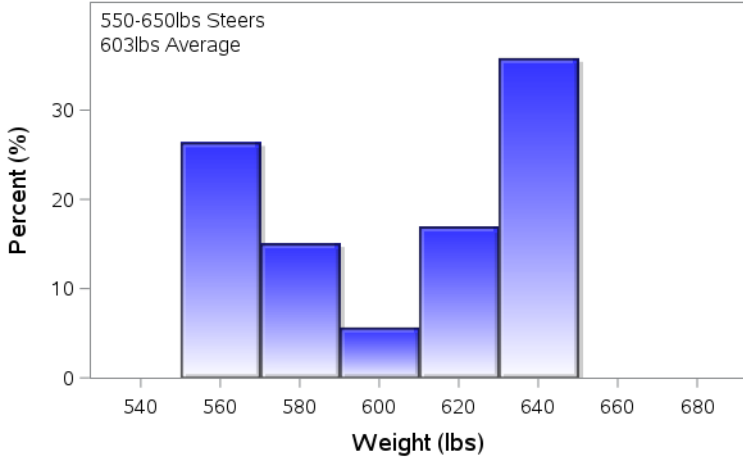
Alberta Settlement Price Data (Week of Jun 29)



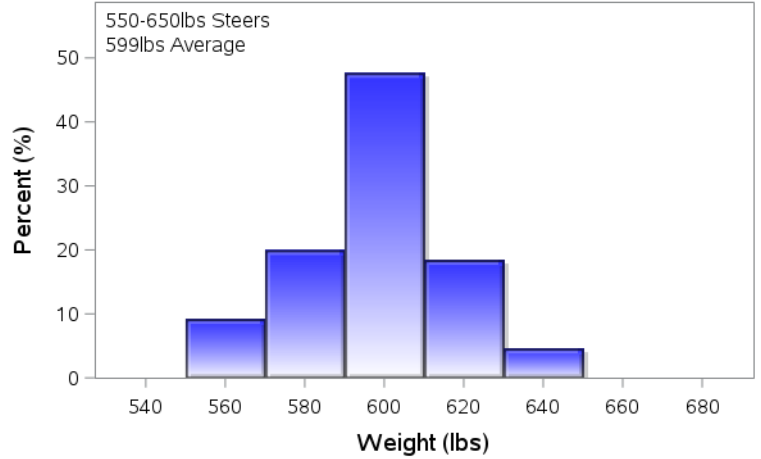
SaskMan Settlement Price Data (Week of Jun 29)



Alberta Settlement Weight Data (Week of Jun 29)



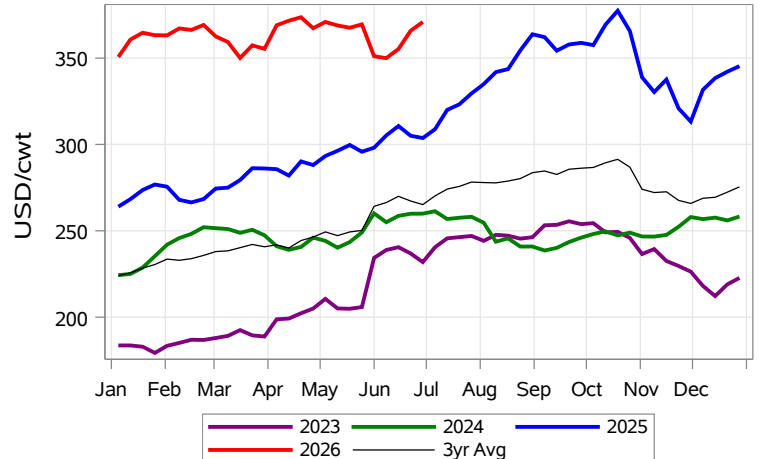
SaskMan Settlement Weight Data (Week of Jun 29)



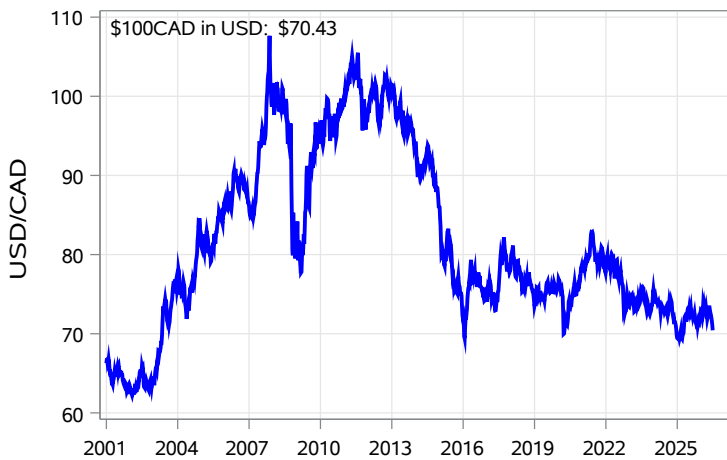
Nearby Feeder Futures Price (Week of Jun 29)



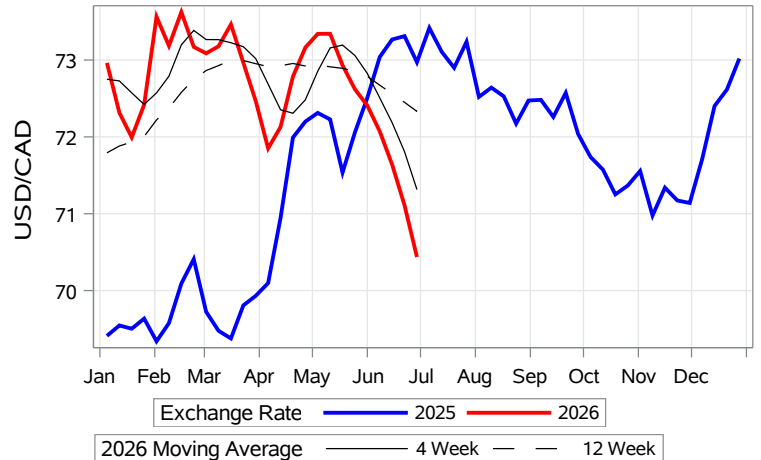
Nearby Feeder Futures Price (Week of Jun 29)



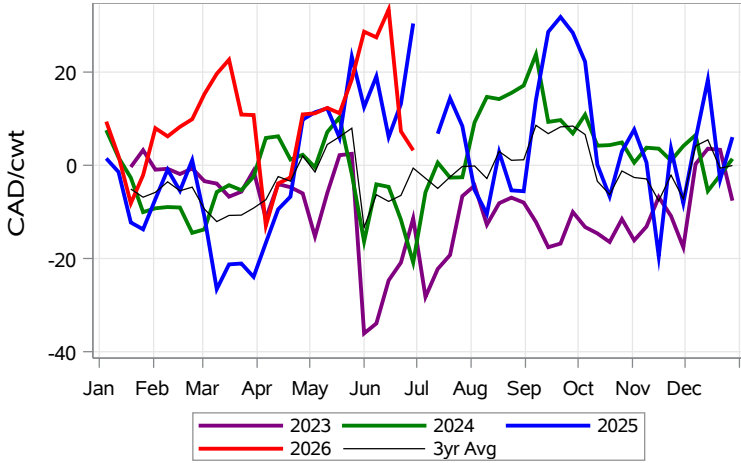
USD/CAD Exchange Rate



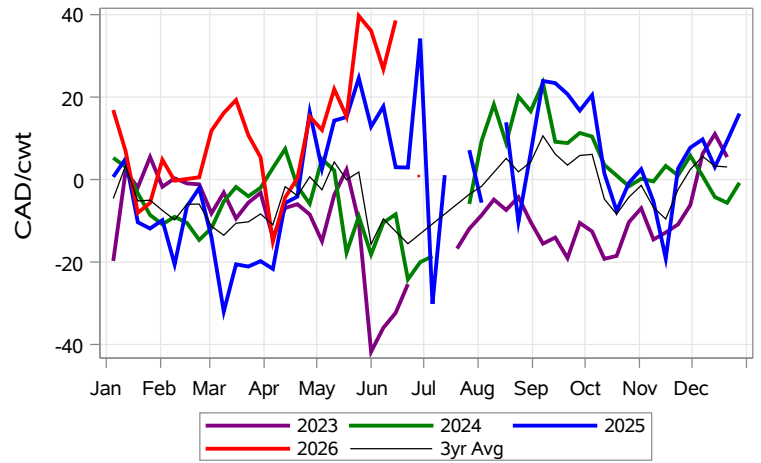
USD/CAD Exchange Rate with Moving Average



Feeder Cash to Futures Basis Alberta (Week of Jun 29)



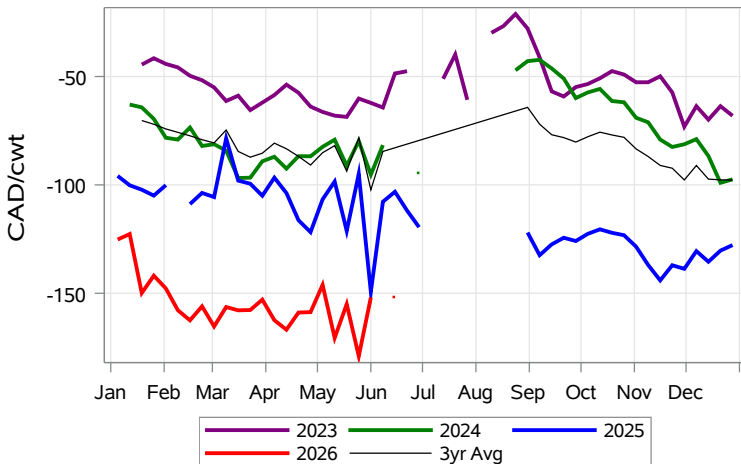
Feeder Cash to Futures Basis SaskMan (Week of Jun 29)



Feeder to Calf Spread (Week of Jun 29)



Feeder to Calf Spread Alberta (Week of Jun 29)



Feeder to Calf Spread SaskMan (Week of Jun 29)

