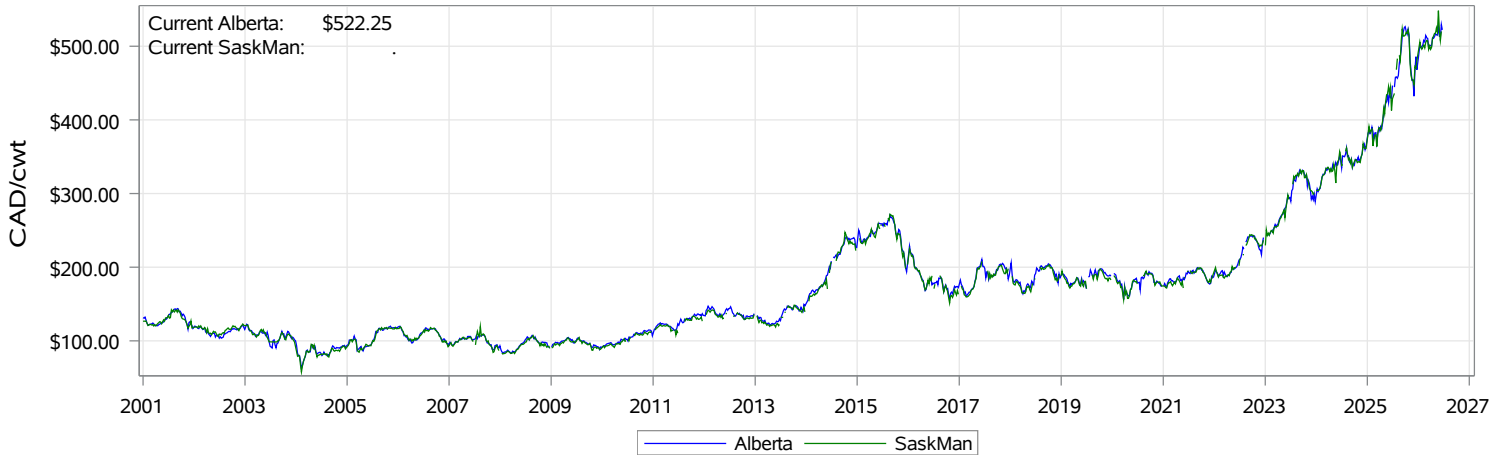
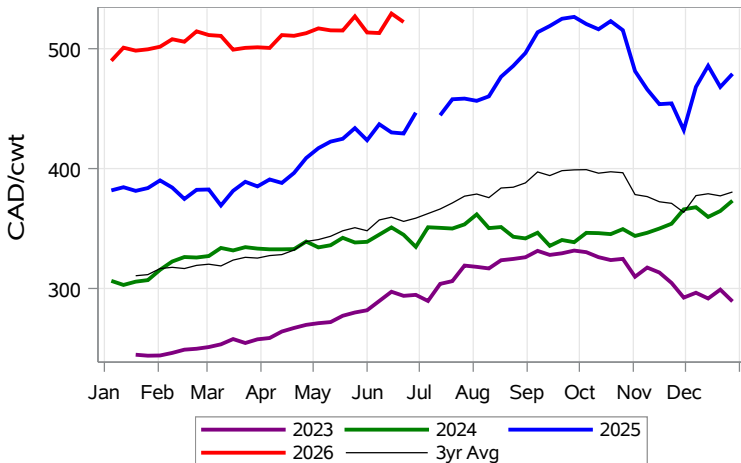


While many factors influence livestock prices, the following are some of the key market indicators that may be helpful when making your LPI purchasing decisions.

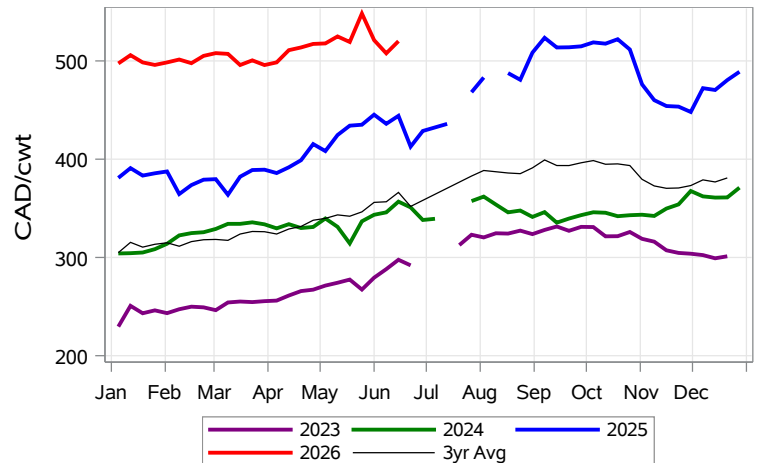
Feeder Settlement Index (Week of Jun 22)



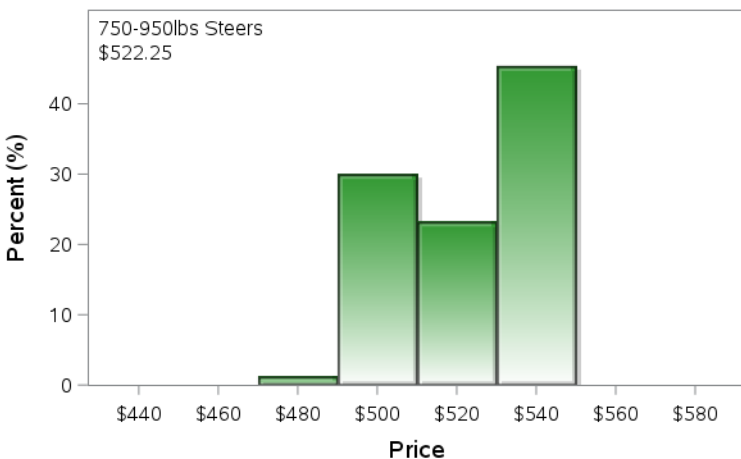
Feeder Alberta Settlement Index (Week of Jun 22)



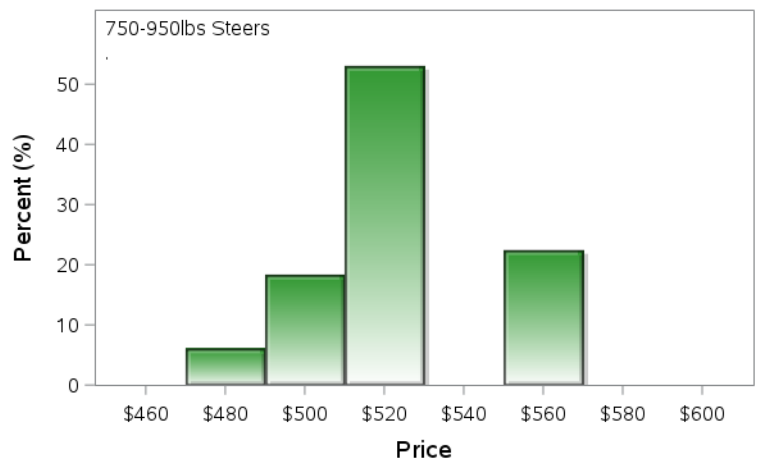
Feeder SaskMan Settlement Index (Week of Jun 22)



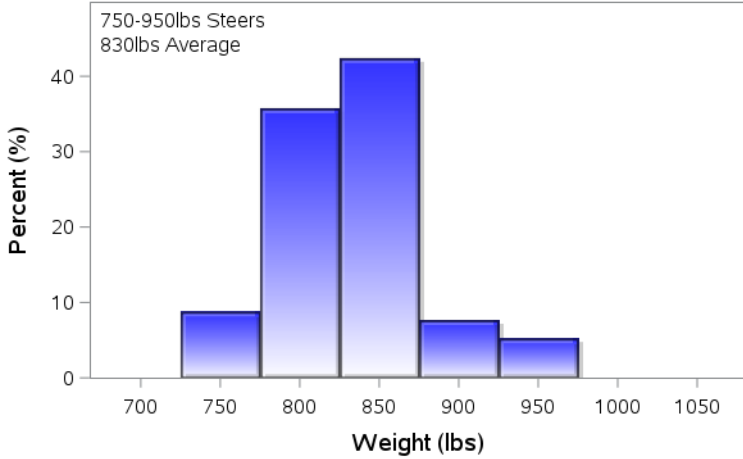
Alberta Settlement Price Data (Week of Jun 22)



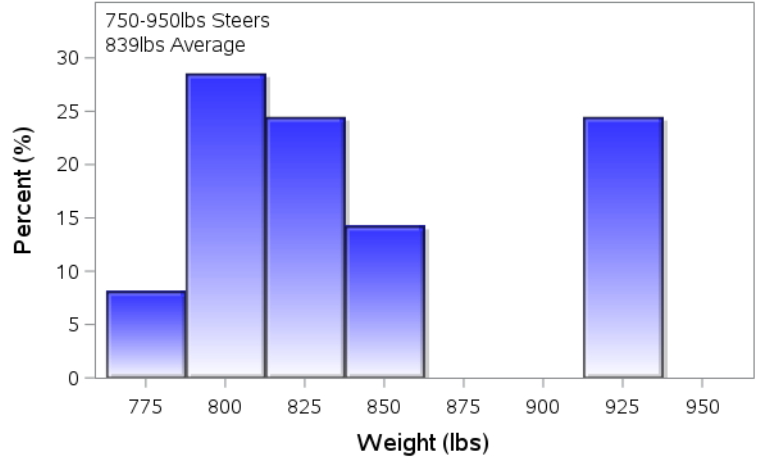
SaskMan Settlement Price Data (Week of Jun 22)



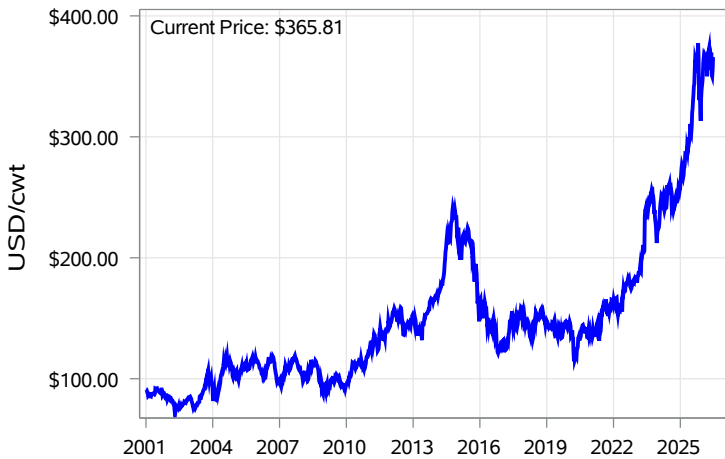
Alberta Settlement Weight Data (Week of Jun 22)



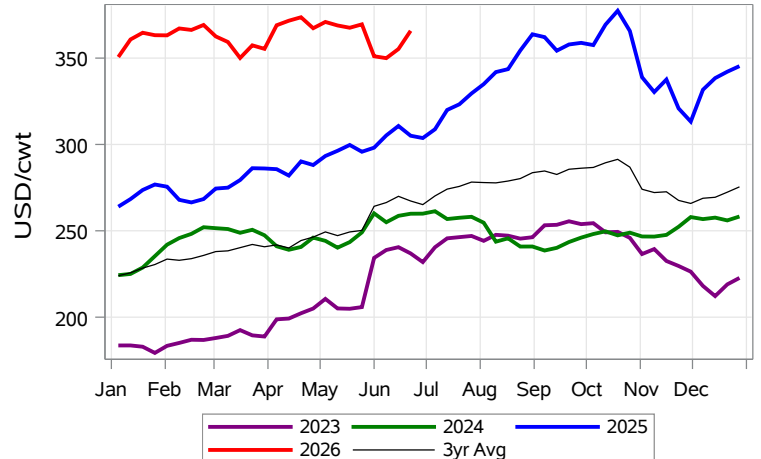
SaskMan Settlement Weight Data (Week of Jun 22)



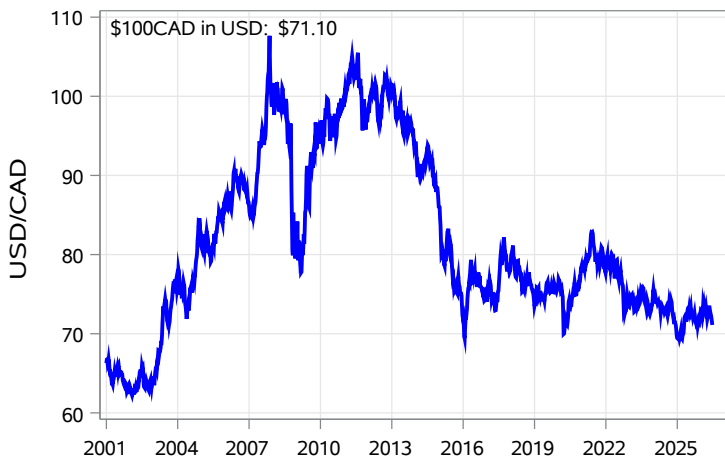
Nearby Feeder Futures Price (Week of Jun 22)



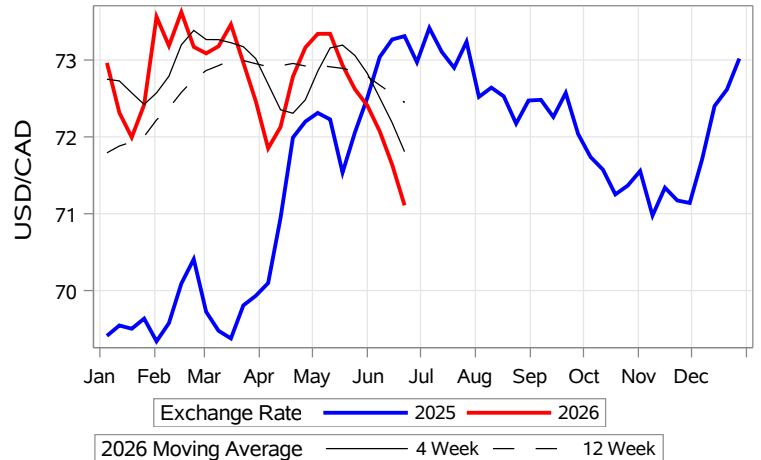
Nearby Feeder Futures Price (Week of Jun 22)



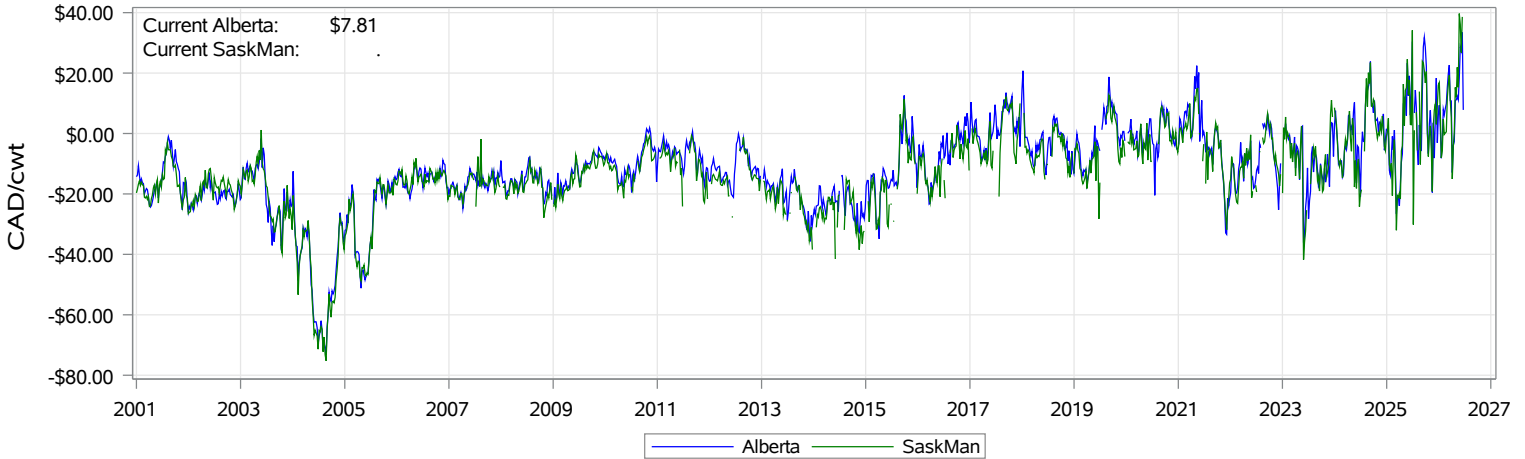
USD/CAD Exchange Rate



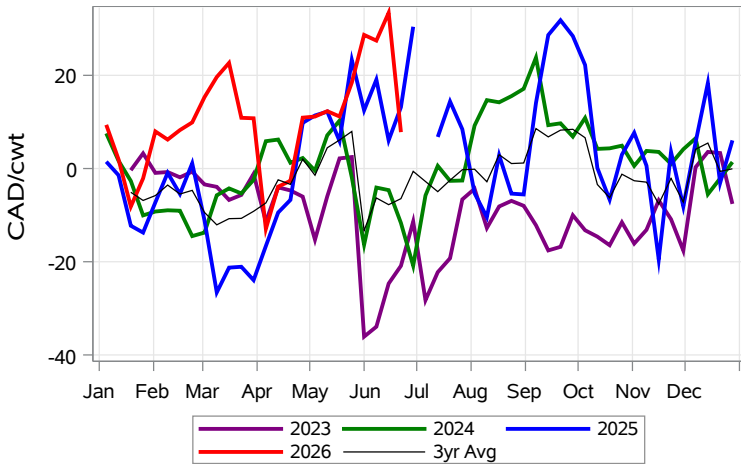
USD/CAD Exchange Rate with Moving Average



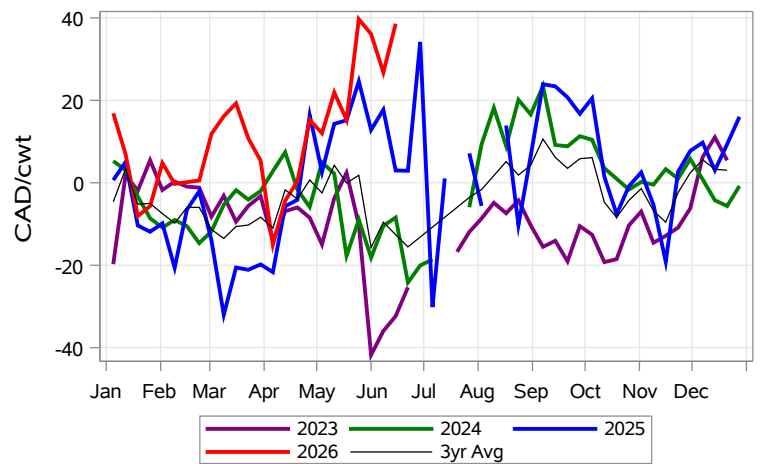
Feeder Cash to Futures Basis (Week of Jun 22)



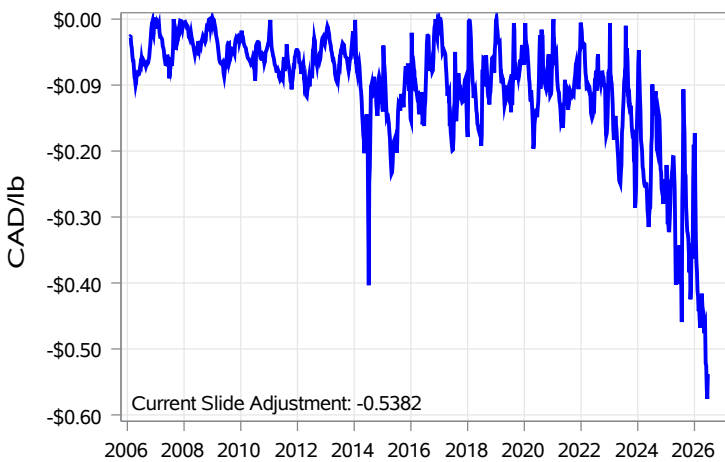
Feeder Cash to Futures Basis Alberta (Week of Jun 22)



Feeder Cash to Futures Basis SaskMan (Week of Jun 22)



Slide Adjustment 750-950lbs Alberta (Week of Jun 22)



Feeder Slide Adjustment Alberta (Week of Jun 22)

